



The Language  
Gallery

# 2020 BROCHURE

LONDON • BIRMINGHAM • MANCHES • NOTTINGHAM





# CONTENTS

---

WELCOME!.....	2
WHY CHOOSE THE LANGUAGE GALLERY? .....	4, 5
SMART LEARNING.....	6
COURSE OPTIONS.....	7
LONDON .....	8, 9
BIRMINGHAM .....	10, 11
MANCHESTER .....	12, 13
NOTTINGHAM .....	14, 15
ENGLISH LANGUAGE COURSES .....	16
ENGLISH FOR EVERY DAY.....	17
ENGLISH FOR STUDYING .....	18
ENGLISH FOR WORKING.....	19, 20
ENGLISH ELECTIVES .....	21
TAILOR MADE COURSES .....	21
JUNIOR & FAMILY CAMPS.....	22
ACCOMMODATION.....	23
CONTACT US .....	24

Manchester



Birmingham



Nottingham



London





# WELCOME!

## WE ARE EXCITED THAT YOU ARE CONSIDERING STUDYING WITH US!

### *We are expanding*

The Language Gallery is set in excellent city centre locations, with schools at the very heart of landmark cities: London, Birmingham, Manchester, and Nottingham in 2020!

We are proud to announce the opening of our new academic centre in Nottingham at the campus of our esteemed partner, The University of Law. Students will study at our partner's newest campus in pristine facilities in the stunning surroundings of this beautiful historic city.

We are delighted to continue our partnerships with prestigious Universities across the UK and look forward to extending our University Pathway Programme in Birmingham, Manchester, London and Nottingham in 2020.

Our junior programmes are going from strength to strength with famous partners including Liverpool Football Club International Academy and the fabulous Pineapple Dance Studios. We can't wait for the amazing new summer and winter Junior Camps in 2020, including Harry Potter, Performing Arts, and Music!

The Language Gallery in the UK is part of the thriving Global University Systems group, an international network of higher-education institutions where 78,000 people are currently studying around the world in 42 international locations. Based in some of the world's biggest cities, from London to Singapore, the group's network is continually growing as we develop partnerships, establish new academic institutions and expand into new regions.

### *A British experience*

The UK is proud to be the home of the English language. We'll help you discover some of the UK's most iconic landmarks outside of your chosen city with organised trips to Stonehenge, Oxford, Cambridge, Bath, Windsor, Edinburgh and more!

Immerse yourself in the British way of life, venture out and explore the city, indulge in the tourist attractions; learn a language and discover the world!

We look forward to welcoming you at The Language Gallery.



#### Our University Partners



English + Football  
Junior Camp



London school students

# WHY CHOOSE THE LANGUAGE GALLERY?

## ✓ *Academic success*

- **Personal learning plan** to create the best course for you to meet your learning goals.
- **Flexible classes** to help you reach your learning goals. Students can move easily between General English, IELTS, English for Work and Academic English classes.
- **Weekly assessments** to help you understand your progress.
- **Tutorials** to discuss your development and set learning goals.
- **Personalised progression** - Our teachers are trained to identify when you are ready to take a level test and move to the next level.
- **Teaching techniques** that encourage independent learning and foster confidence are combined with the following highly effective techniques and approaches for the teaching of English:
  - **Task Based Learning** - Practical activities and tasks to help you develop and improve your language skills.
  - **The Lexical Approach** - Functional language and vocabulary for everyday life and real life situations.
  - **Guided Discovery** - Explore the language and personalise it to your life and learning goals with the support of our teachers.
- This communicative teaching approach is based on **50 years of academic research**.

### ACCREDITATIONS & PARTNERSHIPS



\* London, Manchester & Birmingham school

LONDON ONLY



### AWARDS



LANGUAGE SCHOOL OF THE YEAR - 2018



1<sup>ST</sup>

BEST INTERNATIONAL LANGUAGE SCHOOL UK



2<sup>ND</sup>

EXCELLENCE AWARD  
FOR ENGLISH LANGUAGE TUITION UK

## *Student focus*

- **Friendly and sociable atmosphere** with **activities and trips every week** so students can have fun and make friends quickly.
- **Trips to tourist destinations** further afield for weekends and holidays.
- **Social programme** - different activities every week.
- **24/7 on call staff** - emergency telephone number given to all students.
- **Accommodation** services.
- **Qualified** and friendly teachers.
- **First Aid** and **Welfare Officers** on site.

*'My class is very friendly and also we are like a big family I love them.'*

**Mubin** - Tajikistan

## *City centre locations*

- **Flexible Locations** allow you to change schools to explore and experience the UK (London, Manchester, Birmingham, Nottingham) whilst continuing your personal learning plan.
- Access to **city landmarks and attractions**.
- Public Transport is very accessible.
- Experience the city centre **culture** – markets, festivals, cafes and free events.

**LONDON**

**BIRMINGHAM**

**MANCHESTER**

**NOTTINGHAM**

# SMART LEARNING

PROGRESS FASTER. FEEL CONFIDENT. HAVE FUN.



## WHAT IS SMART LEARNING?

*Language classes · Free trips · Free activities*



**With SMART Learning, we'll help you take your language skills from the classroom into the real world!**

You'll progress faster and grow in confidence as you practise speaking English with new friends from around the world. Discover real UK life as you study themes such as People & Culture, Travel & Tourism, Food & Health, Technology, Sport, History and Art.



History



People & Culture



Food & Health



Technology



Art



Sport



# COURSE OPTIONS

## By level

Course	Level	Starter	Basic User		Independent			Proficient
		Starter	Beginner	Elementary	Low intermediate	High intermediate	Upper intermediate	Advanced
	CEFR	Pre A1	A1	A2	B1	B1+	B2	C1
	IELTS	-	-	3.0 - 3.5	4.0 - 4.5	5.0 - 5.5	5.5 - 6.5	7.0 - 8.0
General English		x	✓	✓	✓	✓	✓	✓
IELTS Preparation		x	x	x	x	✓	✓	✓
English for Work		x	x	x	x	✓	✓	✓
Academic English		x	x	x	x	✓	✓	✓
University Pathway programme		x	x	x	x	✓	✓	✓
Internship Pathway Programme		x	x	x	x	✓	✓	✓

## By location

Course	London	Birmingham	Manchester	Nottingham
General English	✓	✓	✓	✓
IELTS Preparation	✓	✓	✓	✓
English for Work	✓	x	x	x
Academic English	✓	✓	✓	✓
University Pathway programme	✓	✓	✓	✓
Internship Pathway Programme	✓	x	x	x

## Timetable

	Monday	Tuesday	Wednesday	Thursday	Friday
AM classes	General English (15 hours per week)				
	English for Work (15 hours per week)				
	IELTS Preparation (15 hours per week)				
	Academic English (15 hours per week)				
	University Pathway (21 hours per week)				
	Internship Pathway Programme (19 hours per week)				
Lunch		SMART Activity		SMART Activity	Graduation Ceremony
PM classes	General English (15 hours per week)				
	Elective 1 (+4 hours per week)*				
	Elective 2 (+2 hours per week)			Elective 2 (+2 hours per week)	SMART Trip

# LONDON



## Why study in London?

London has been named as the world's best city for students\* and is home to world-leading higher education institutions, excellent employment opportunities and a vibrant cultural life.

Our school has views of the famous **Tower of London** and the iconic **Tower Bridge**. A short walk away are **St Katherine's Docks** and **Potters Fields Park**. A short bus ride away are **Borough Market**, the visionary **Shard** building, and **Shakespeare's Globe Theatre**. Take the tube to the centre of the city to visit **Oxford Street**, **Piccadilly Circus** and **Leicester Square**.

\* QS Best Student Cities Ranking, by global education consultancy Quacquarelli Symonds, ranks London as the world's best city for students - July 2019.

### Things to do

- Experience glorious royal pageantry with a visit to **Buckingham Palace**, the **Royal Albert Hall** and the **Horse Guard's Parade**.
- Prepare to take your place on the catwalk with a luxurious shopping trip to **Harrods** and find premium souvenirs at the world's most extravagant toy shop, **Hamleys**.
- Be immersed in the commanding grandeur of **Big Ben**, **The Houses of Parliament** and **Westminster**.
- Take a 'selfie' with London's famous red buses at the **London Transport Museum** or on the iconic **Tower Bridge**!
- Visit hundreds of free tourist attractions such as the **Natural**

**History Museum**, **Science Museum**, and the **Victoria and Albert Museum**.

- Explore history at the **Tower of London** and **London Dungeons**.
- Feed your soul with a walk in the Royal Parks, or a visit to London's free art galleries including the **National Portrait Gallery** and **TATE Modern**.
- Take a tour and see world class football with home clubs - **Chelsea**, **Arsenal**, **Tottenham Hotspur**, and **West Ham United**.
- Join the locals and watch the tennis and eat strawberries at Grand Slam Wimbledon

### Cultural Events

- London Fashion Week
- London Film Festival
- Notting Hill Carnival
- Trooping the Colour
- London's New Year's Day parade
- Pride London
- The Chelsea Flower Show
- The Boat Race

### Winter

- Ice Skating at Somerset House or the Natural History Museum
- Guy Fawkes Night - Bonfire and Fireworks
- Winter Wonderland in Hyde Park
- Southbank Christmas Market
- Christmas Lights in the West End
- Christmas Pantomime!

## Facilities

- Student Lounge
- Classrooms
- Free WiFi
- Water Cooler
- Cafe
- Drinks and Snacks Machines





*“I really loved the school...  
The teachers are supportive.  
I felt encouraged during  
the classes. I loved the  
homework, the exercises  
sometimes are dynamic,  
sometimes more funny, but  
I enjoyed both.”*

**Larissa** - Brazil | General English

## Available Courses

### English Core Courses

- General English
- IELTS Preparation
- English for Work
- Academic English
- University Pathway Programme
- Internship Pathway Programme

### English Electives

- Academic Essay Writing
- Business
- Critical Thinking
- Film Club
- Grammar Club
- IELTS Preparation
- Pronunciation
- Speak Up!
- English in your City
- Write

### Hours available

- 15 hours (Core course)
- 19 hours (Core course + 1 Elective)
- 21 hours (University Pathway Programme)





### Tailor-Made Courses

For individuals and groups, including English for Specific Purposes:

- Accounting & Finance
- Advertising & Marketing
- Automotive
- Aviation & ELPAC
- Cambridge Exam Preparation
- General English
- Hospitality & Tourism
- Human Resources
- IELTS Preparation
- Media
- Medical English
- OET Preparation
- Oil & Gas
- Police & Law Enforcement
- Sightseeing
- Teacher Refresher
- Trinity Exam Preparation



## Evening Courses

 English for Work	IELTS Preparation		OET Preparation	Trinity College London GESE Exam Preparation
 German	Starters	A1	A2	B1+ and above (Conversational)
 Spanish	Starters	A1	A2	B1+ and above (Conversational)
 French	Starters	A1	A2	B1+ and above (Conversational)

# BIRMINGHAM



## Why study in Birmingham?

One of the most lively and dynamic destinations, Birmingham is the UK's second largest city and a great choice for international students.

Our school is located in the thriving centre of this regenerating city and is perfectly positioned next to the **iconic new state-of-the-art library**, imposing **Victorian architecture** and beautiful **Birmingham Cathedral**.

Students will have easy access to all the city has to offer with excellent public transport from shopping, tourism to entertainment.

All of this is on offer at a fraction of the cost of London – which is only 90 minutes away by train. Come to the second city, and you won't be disappointed.

### Things to do

- For an unforgettable shopping trip, visit Birmingham's prestigious **Jewellery Quarter**, iconic **Selfridges, Mailbox and Bullring malls** and the **world's biggest Primark!**
- Take an open top bus, walking tour or **boat trip down the canals** to discover Birmingham's **Georgian industrial history** and Victorian heritage.
- See a working watermill and visit beautiful **Victorian architecture**.
- Explore **Dudley Castle** and **Shakespeare's birthplace**.
- Embrace the arts at **Birmingham Museum and Art Gallery**.
- Race your friends at the world's largest track at the Birmingham **Grand Prix Karting** or break the code together at the **escape rooms**.
- Immerse yourself in the world of music at the **Symphony Hall, O2 Academy, Resort World Arena**.
- Discover the natural world at Birmingham **Wildlife Conservation Park** and **SEA LIFE Birmingham**.
- Check out Birmingham's **Premier League football club Aston Villa**
- Join the locals and watch the **Greyhound racing**.

### Cultural Events

- Birmingham Comedy Festival
- St Paddy's Day Parade
- Birmingham Literature Festival
- Foodies Festival
- Weoley Castle ruins
- Culture Feast
- Birmingham Open Media Exhibition
- Indian Film Festival

### Winter

- Ice Skating
- Winter Festivals
- Christmas Pantomime!
- Christmas Lights
- The Frankfurt Christmas Market and Craft Market

## Facilities

- Student Lounge
- Classrooms
- Free WiFi
- Water Cooler
- Kitchenette





The Canal House, Birmingham

*“TLG team makes you feel welcome the first day you arrive. Everybody is so nice and helpful!” And I liked coming to school, which I don’t like at home.”*

**Anna** - Switzerland | General English

## Available Courses

### English Core Courses

General English  
IELTS Preparation  
Academic English  
University Pathway Programme

### English Electives

Academic Essay Writing  
Business  
Critical Thinking  
Film Club  
Grammar Club  
IELTS Preparation  
Pronunciation  
Speak Up!  
English in your City  
Write

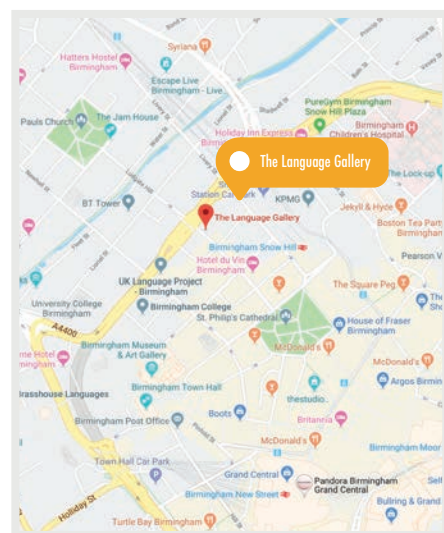
### Hours available

15 hours (Core course)  
19 hours (Core course + 1 Elective)  
21 hours (Core course + 2 Electives)

### Tailor-Made Courses

For individuals and groups, including English for Specific Purposes:

Accounting & Finance  
Advertising & Marketing  
Automotive  
Aviation & ELPAC  
Cambridge Exam Preparation  
General English  
Hospitality & Tourism  
Human Resources  
IELTS Preparation  
Media  
Medical English  
OET Preparation  
Oil & Gas  
Police & Law Enforcement  
Sightseeing  
Teacher Refresher  
Trinity Exam Preparation



## Evening Courses



English for Work

IELTS Preparation

OET Preparation

Trinity College London GESE Exam Preparation



Arabic

Starters

A1

A2

B1+ and above (Conversational)



Spanish

Starters

A1

A2

B1+ and above (Conversational)



French

Starters

A1

A2

B1+ and above (Conversational)



# MANCHESTER



## Why study in Manchester?

A vibrant student hub and one of world's top ranking cities for students.\* This 'capital of the North' has a reputation for being full of life and exciting opportunities and attracts students from all over the world each year to study.

The city is rich in its cultural offerings of music, art and theatre. From local coffee shops and bars to gigs and festivals, there's always a cultural experience just around the corner.

Major attractions include **The Manchester Art Gallery**, **The National Football Museum**, **The Museum of Science and Industry** and the world-famous **Old Trafford Football Stadium**.

Our school is situated in the heart of Manchester, just 3 minutes from the beautiful **Piccadilly Gardens** and the bustling shopping area. Public transport makes getting to the school and exploring the city quick and easy.

\* QS Best Student Cities Ranking, by global education consultancy Quacquarelli Symonds, ranks Manchester in the top 30 student cities.

### Things to do

- Support the home team and watch world class football with **Manchester United** and **Manchester City**. Explore club history with a **tour of Old Trafford and Etihad stadiums**.
- Recount historic British moments at the **Imperial War Museum (IWM North)**.
- Visit **free Museums and Art Galleries** including the **Lowry Museum** and **The Manchester Art Gallery**.
- Take a dip in the **Victoria Baths** for a luxurious swimming experience in this 'water palace'.
- For dinner, head to **Europe's largest Chinatown**.
- For decadent shopping, the **Trafford Centre** is not to be missed.
- Experience one of the UK's most outstanding areas of natural beauty with a day trip to the **Peak District National Park**.

### Cultural Events in Manchester:

- Manchester International Festival
- Manchester Jazz Festival
- Manchester Literature Festival
- Manchester Day
- The Manchester Fringe Festival
- Food and Drink Festivals
- Manchester Pride
- Sound of the City

### Winter

- Ice skating in Winter Funland
- Walk after dark through Chester Zoo
- Christmas markets
- Christmas shows
- Chinese New Year Parade

## Facilities

- Student Lounge and Games area
- Classrooms
- Free WiFi
- Computer Area
- Kitchenette
- Water Cooler

*"I enjoyed the time I've spent here! I made a lot of new friends here and it was an amazing experience. All the teachers and staff are very friendly and we became like a small family."*

**Sabrina** - Tajikistan | IELTS Preparation



## Available Courses

### English Core Courses

General English  
IELTS Preparation  
Academic English  
University Pathway Programme

### English Electives

Academic Essay Writing  
Business  
Critical Thinking  
Film Club  
Grammar Club  
IELTS Preparation  
Pronunciation  
Speak Up!  
English in your City  
Write

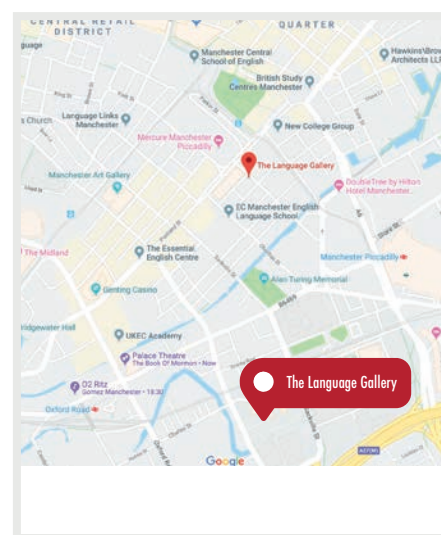
### Hours available

15 hours (Core course)  
19 hours (Core course + 1 Elective)  
21 hours (Core course + 2 Electives)

### Tailor-Made Courses

For individuals and groups, including  
English for Specific Purposes:

Accounting & Finance  
Advertising & Marketing  
Automotive  
Aviation & ELPAC  
Cambridge Exam Preparation  
General English  
Hospitality & Tourism  
Human Resources  
IELTS Preparation  
Media  
Medical English  
OET Preparation  
Oil & Gas  
Police & Law Enforcement  
Sightseeing  
Teacher Refresher  
Trinity Exam Preparation



## Evening Courses



English for Work

IELTS Preparation

OET Preparation

Trinity College London GESE Exam Preparation



German

Starters

A1

A2

B1+ and above (Conversational)



Spanish

Starters

A1

A2

B1+ and above (Conversational)



French

Starters

A1

A2

B1+ and above (Conversational)



# NOTTINGHAM



## Why study in Nottingham?

Nottingham is a dynamic county capital with big-city aspirations. We're proud to open our newest and most academic centre on the University campus of our prestigious partner University of Law.

Students will be based in the University's flagship campus, set in stunning surroundings at the foot of **Nottingham Castle** and at the **heart of the city centre**. This friendly place is easy to walk around and has a good public transport system. From ancient pubs to contemporary art galleries, Nottingham combines old and new and is host to a 60,000 strong, vibrant student population.

The city's lively music and club scene and reputation for more bars, pubs, restaurants and cafés per square mile than any other city in Europe, make Nottingham a brilliant city for students.

### Things to do

- Check out England's oldest pub, **Ye Olde Trip to Jerusalem**.
- Take a tour of the evocative **National Justice Museum**.
- Explore history at the **Nottingham Castle Museum and Art Gallery**.
- Visit **Wollaton Hall Gardens** and **Deer Park** to see the home of Batman (Dark Knight Rises) and herds of wild red deer.
- Discover how people lived under the city with a tour of the **Nottingham Caves**, an ancient network of sandstone caves, thousands of years old.
- See the UK's largest exhibition of multicultural art at the **New Art Exchange** and explore experimental art at the **Nottingham Contemporary**.
- Experience one of the most spectacular landscapes in the UK with a day trip to the breathtaking mountains of the **Peak District National Park** or a guided walk around **Sherwood Forest**.

### Cultural Events

- Robin Hood Marathon
- Nottingham Lions Ice Hockey
- Food festivals
- Music festivals
- Pikes and Plunder Civil War Festival

### Winter

- Ice Skating at National Ice Centre, home of Nottingham Lions Ice Hockey team
- Nottingham Winter Wonderland and Christmas Markets
- Guy Fawkes Night - Bonfire and Fireworks
- Christmas Lights in Nottingham's Old Market Square
- Christmas Pantomime!





## Available Courses

### English Core Courses

General English  
 IELTS Preparation  
 Academic English  
 University Pathway Programme

### English Electives

General English  
 Academic Essay Writing  
 IELTS Preparation

### Hours available

15 hours (Core course)  
 21 hours (Core course + 2 Electives)



## Facilities

- Student Lounge and Games area
- Classrooms
- Free WiFi
- Kitchennette
- Drinks and Snacks Machines

*"Our newest centre offers future University students the chance to study with us in the campus of the University of Law. Start your journey with us and progress to a university of your choice with our IELTS and Pathway courses."*

**Lea Aylett** | Academic Director

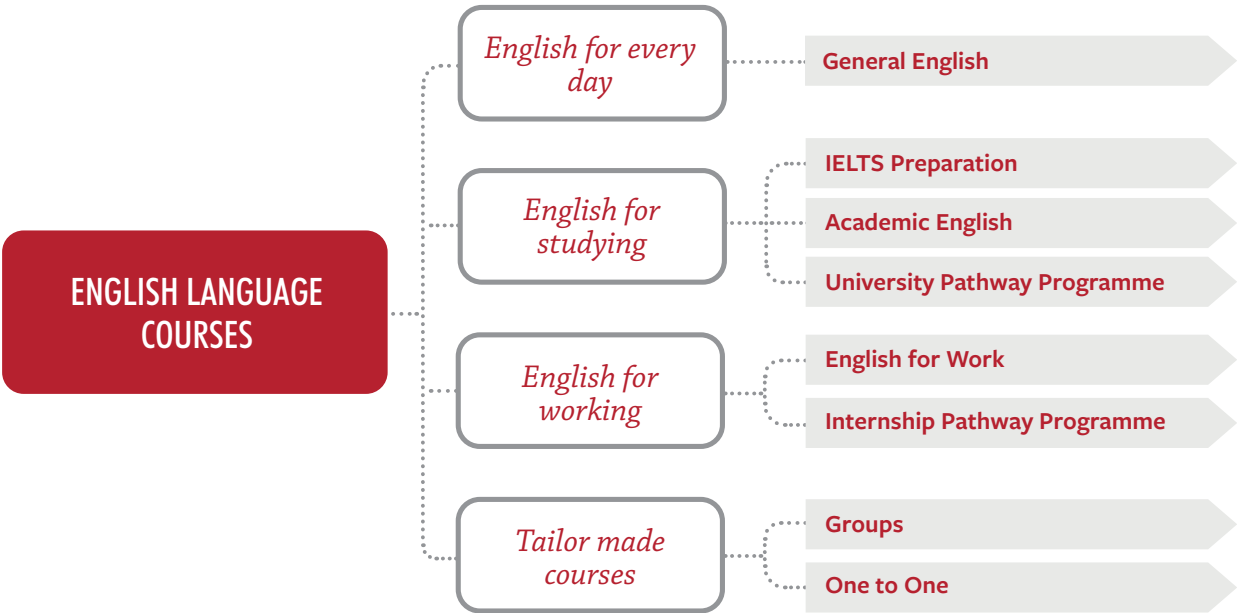




# ENGLISH LANGUAGE COURSES

Our core courses of 15 hours per week will see you progress and gain confidence in your language skills focussing on English for Every Day, English for Working or English for Studying.

Our enjoyable classes with friendly and qualified teachers will help you deal with real life situations and tackle any exams by learning in a practical way. You'll develop key skills and knowledge in: reading, writing, listening and speaking, pronunciation, vocabulary, grammar and study skills.







## *English for every day*

### General English

#### Who is the course for?

- For students of all levels who want to improve their General English.

#### Learning Outcomes

- Improve reading, writing, listening and speaking, pronunciation, vocabulary, grammar and study skills.
- Learn to use strategies and techniques to develop all skills to make the maximum progress.
- Feel more confident in English-speaking environments and interacting with other English speakers.

#### LEVEL:

A1 to B2 and above

#### DURATION:

1+ weeks

#### MINIMUM AGE:

16

#### CLASS SIZE:

Maximum 16

#### TIMETABLE:

Mornings or Afternoons (determined by the school) Monday to Friday

#### LESSONS:

15 hours per week





# English for studying

## IELTS Preparation

**Who is the course for?**

- For students who are preparing for the Academic IELTS.

**Learning outcomes**

- Improve reading, writing, listening and speaking, pronunciation, vocabulary, grammar and study skills.
- Learn about the different exam sections and the types of questions you will face.
- Learn to use strategies and techniques to develop all skills to make the maximum progress and gain an internationally recognised qualification.

*Every class takes a test of two papers every week – Reading and Speaking or Listening and Writing.*

**LEVEL:**

B1+ and above

**DURATION:**

2+ weeks

**MINIMUM AGE:**

16

**CLASS SIZE:**

Maximum 16

**TIMETABLE:**

Mornings, Monday to Friday

**LESSONS:**

15 hours per week plus 4 or 6 extra elective hours available

## Academic English

**Who is the course for?**

- For students who are preparing to go to university and study in English.

**Learning outcomes**

- Improve academic reading, writing, listening and speaking skills.
- Learn study skills and how to think critically.
- Gain an insight to culture and expectations in a university in an English speaking country.

**LEVEL:**

B1+ and above

**DURATION:**

1+ week

**MINIMUM AGE:**

16

**CLASS SIZE:**

Maximum 16

**TIMETABLE:**

Mornings, Monday to Friday

**LESSONS:**

15 hours per week plus 4 or 6 extra elective hours available

# University Pathway Programme

## Who is the course for?

- For students who are preparing to go to university and study in English.
- For students who want to progress to one of our partner universities without taking the IELTS test.

## Course content and structure

- Study General English and Academic English until you are 0.5 IELTS equivalent below your partner university offer letter.
- Begin an 8 week intensive course studying further academic English and skills, critical thinking and UK academic culture. Complete coursework and prepare for the final examination to progress to university.
- Teachers pay attention to you as an individual, monitoring your strengths and weaknesses, to help you progress every day.
- Complete coursework and prepare for the final examination to progress to university.

### LEVEL:

B1+ and above

### DURATION:

8+ weeks

### MINIMUM AGE:

16

### CLASS SIZE:

Maximum 16

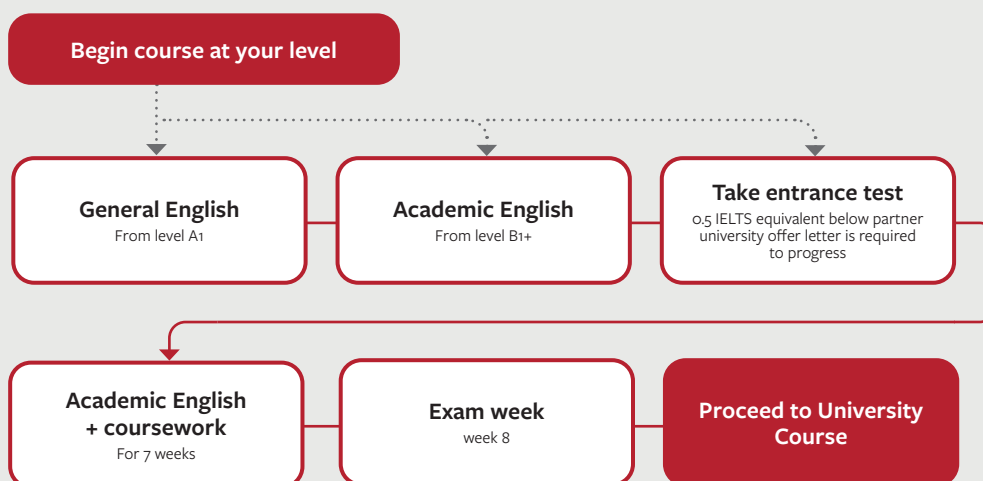
### TIMETABLE:

Mornings and Afternoons

Monday to Friday

### LESSONS:

21 hours per week



## Learning outcomes

- Improve academic reading, writing, listening and speaking skills needed for entry to a bachelor's or master's degree.
- Learn study skills and how to think critically.
- Gain an insight to culture and expectations in a university in an English speaking country.
- Progress to one of our partner universities.

## University Pathway Programme partners





# English for working

## English for Work

### Who is the course for?

- For students of all levels who want to improve their English for use at work.

### Learning outcomes

- Improve reading, writing, listening and speaking, pronunciation, vocabulary, grammar for use in the international workplace.
- Learn to use strategies and techniques to develop all skills to make the maximum progress.
- Learn practical skills including writing business correspondence, conducting negotiations, making presentations, speaking on the telephone and participating in meetings.
- Feel more confident in English-speaking workplace environments and interacting with other English speakers.

#### LEVEL:

B1+ and above

#### DURATION:

1+ weeks

#### MINIMUM AGE:

16

#### CLASS SIZE:

Maximum 16

#### TIMETABLE:

Mornings, Monday to Friday

#### LESSONS:

15 hours per week plus 4 or 6 extra elective hours available

## Internship Pathway Programme

### Who is the course for?

- For students who want to study in London and prepare for a UK internship.
- Students with the right to work in the UK.

Module 1: Improve your English to a recommended B1+/B2 level

Module 2: An internship programme - from week 1\*

### Internship areas include but are not limited to:

- |                          |                           |
|--------------------------|---------------------------|
| • Accounting             | • IT                      |
| • Advertising            | • Law                     |
| • Business               | • Media, TV and radio     |
| • Catering               | • PR and marketing        |
| • Creative arts          | • Real estate             |
| • Fashion                | • Recruitment             |
| • Health and social care | • Science and engineering |
| • Hospitality            | • Sports management       |

### Learning outcomes

- To gain the Business English and employability skills to undertake an internship in an English-speaking environment.

#### LEVELS:

B1+ and above

#### DURATION:

On request

#### MINIMUM AGE:

18

#### CLASS SIZE:

Maximum 16

#### START DATES:

Every Monday  
(except public holidays)

#### LESSONS:

15 hours per week plus 4 or 6 extra elective hours available

\*External providers. Additional fees apply.  
The Language Gallery does not guarantee placement.



# English Electives – to fast track progress

## Who are the classes for?

- For students looking for a more intensive course and faster progress.

## Learning Outcomes

- Electives will build on learning from the core classes and allow students to focus on areas of particular interest.

### IELTS Preparation

Focus on essential skills

### Speak Up!

Learn all the conversation skills you need

### Write

Learn about and practise different forms of writing: emails, text messages, and social media posts

### Grammar Club

Improve your accuracy and knowledge; perfect if you're taking an exam soon

### Critical Thinking

Gain the skills and language needed for university study in English

### Academic Essay Writing

Focus on writing longer essays as needed at university

### Business

Build your confidence through presentations, meetings, negotiations, and correspondence

### Film Club

Improve your knowledge of English through studying and watching films

### English in the City

Develop your knowledge of English through studying your city, giving you more skills and ideas for your time outside of the school

### Pronunciation Clinic

Improve your pronunciation

## Tailor made courses

### Groups

#### Who is the course for?

- Tailored tuition for groups of people who wish to study together.
- We build your English language course around the subjects and skills you need. You can choose the content, number of lessons, times and accommodation.

#### Courses can include:

- Advertising and marketing
- Automotive industry
- Aviation and ELPAC
- Cambridge Exam preparation
- Engineering
- Finance
- Hospitality and tourism
- Human resources
- IELTS preparation
- Law
- Media
- Medical English
- OET preparation
- Oil and gas
- Police and law enforcement
- TOEFL Exam preparation

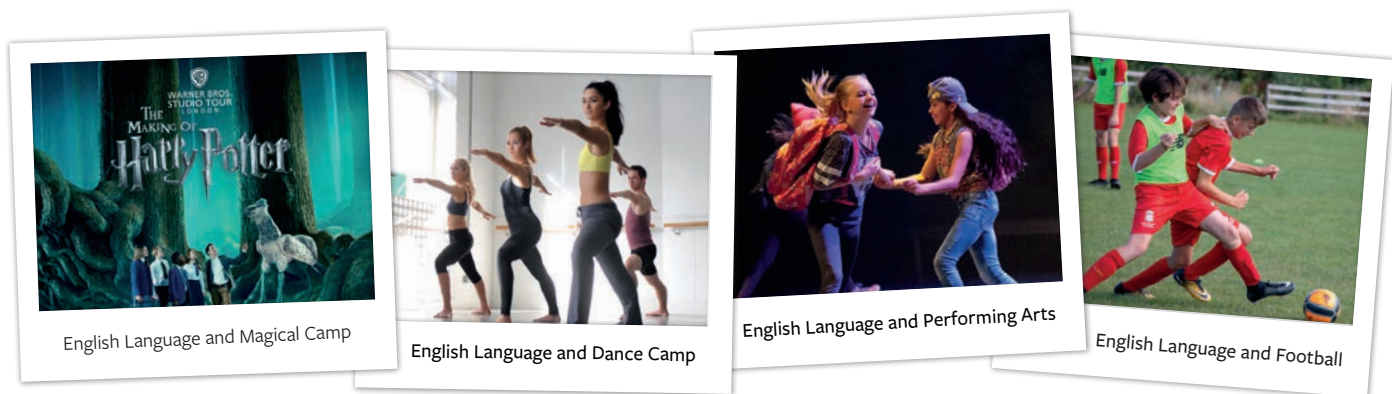
For more information, please contact The Language Gallery team at: [English@TheLanguageGallery.com](mailto:English@TheLanguageGallery.com)

### One to One

#### Who is the course for?

- For students looking for personal attention and focussed lessons around their specific learning goals and needs.
- Students may focus on a range of different areas, such as:
  - Improving your CV
  - Cover letter writing
  - Presentation practise
  - IELTS writing or speaking skills
  - Accent reduction
  - Business communications

For more information, please contact The Language Gallery team at: [English@TheLanguageGallery.com](mailto:English@TheLanguageGallery.com)



# JUNIOR CAMPS

Our summer and winter camps offer boys and girls (age 12-17 years) a life-changing opportunity to perfect their football or dance skills, explore the sights of the city or discover the magical world of Harry Potter whilst improving their English Language skills in a safe and secure environment.

Summer	City	Minimum stay	Maximum stay
English Language and Making Music - in partnership with London College of Creative Media (LCCM) <b>NEW</b>	London	1 week	1 week
English Language and Performing Arts - in partnership with Pineapple Performing Arts School <b>NEW</b>	London	1 week	1 week
English Language and Magical Camp - Harry Potter film locations <b>NEW</b>	London	1 week	1 week
English Language and Dance Camp - in partnership with Pineapple Dance Studios	London	1 week	2 weeks
English Language and Sightseeing Camp	London	1 week	4 weeks
English Language and Sightseeing Camp	Manchester	1 week	4 weeks
English Language and Football - in partnership with Liverpool Football Club International Academy	Preston	2 weeks	4 weeks
Football only - in partnership with Liverpool Football Club International Academy	Preston	2 weeks	4 weeks

Winter	City	Minimum stay	Maximum stay
English Language and Magical Camp - Harry Potter film locations <b>NEW</b>	London	1 week	1 week
English Language and Sightseeing Camp	London	1 week	1 weeks
English Language and Sightseeing Camp	Manchester	1 week	2 weeks

For more information please see our Juniors Brochure or contact us: [English@TheLanguageGallery.com](mailto:English@TheLanguageGallery.com)

# FAMILY CAMPS

An exciting opportunity for children age 12-17 and their parents (or guardians) to improve their English skills together in the school and for children to join our Junior Camp activities whilst adults have time to explore London.

Our excellent junior and adult language and activity programmes are fun and flexible for all ages and we can even help you find suitable accommodation.

Children can choose activities from Harry Potter filming locations, London Sightseeing, Dance, Making Music or Performing Arts.

## Option 1

**Mornings:** Children join our Junior language classes. Parents have free time.

**Afternoons:** Children join our supervised activities. Parents have free time.

## Option 2

**Mornings:** Children join our Junior language classes. Parents join our adult classes.

**Afternoons:** Children can join our supervised activities whilst parents have free time to explore London.

## Option 3

**Mornings:** Parents and children join our language classes.

**Afternoons:** Explore London together as a family.



# ACCOMMODATION

We want to make sure that you have a good experience in your home away from home. Each city offers its own accommodation options\* to meet your comfort and budget needs.



Residents in residence garden

## *Halls of Residence*

Our Halls of residence offer a range of rooms and prices to suit your budget. Safe and secure residence options are conveniently located in each city and are home to students from all over the world. Living in halls is your chance to live independently and socialise with other international students while you enjoy the city you're studying in.

\*Available in London, Manchester, Birmingham and Nottingham



Terraced house, London

## *Homestay*

As our schools are located in multi-cultural cities, you can take the opportunity to stay with families from different backgrounds. Here you will be immersed in local culture and language by living in a family environment. Homestay accommodation is a great place to practise your English outside of the classroom. All homestay houses offer a clean and comfortable room and different meal plans are available to meet your needs.

\*Available in London, Manchester, Birmingham and Nottingham

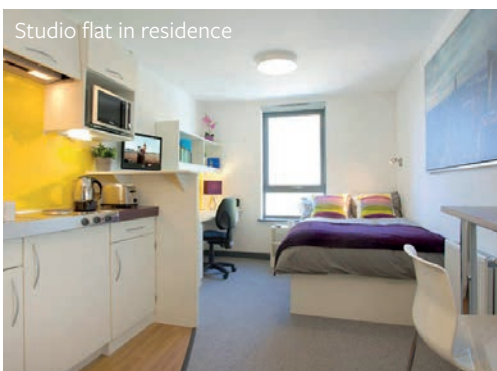


Residents sharing dinner

## *House Share*

Share self-catered accommodation with students or young professionals from around the globe. We'll arrange the ideal flat share, meeting your budget and location needs.

\*Available in London



Studio flat in residence

## *Studio Apartments*

Private accommodation is available for your stay which is usually centrally located. Studio apartments are available for individuals or couples.

\*Available in London, Manchester and Birmingham



*Learn Languages,  
Discover the World!*

London Toronto  
Birmingham Vancouver  
Manchester  
Nottingham



**The Language  
Gallery**

PART OF



**GLOBAL  
UNIVERSITY  
SYSTEMS**



**[www.TheLanguageGallery.com](http://www.TheLanguageGallery.com)**



UK +44 (0) 20 3435 4569



**[English@TheLanguageGallery.com](mailto:English@TheLanguageGallery.com)**



**London** First floor, 40 Tower Hill, EC3N 4DX, UK

**Birmingham** Second floor, 63 Church Street, Birmingham, B3 2DP, UK

**Manchester** 4 Minshull Street, Barlow House, Manchester, M1 3DZ, UK

**Nottingham** 1 Royal Standard Place, Nottingham, NG1 6FS, UK

OPENING IN FEBRUARY 2020