

49

Years'
Experience
in Teaching

Frances**King**
School of English



2022

London Family Programme

including enrolment
details and fees

We'll get you
speaking English





LOCATION

Parents and their children study in the same location in our Kensington school, opposite Gloucester Road Station, or nearby annexe within walking distance.



AGES

Children of ages 6-16 are accepted. In summer, a parent or guardian of a 6 year old must also take a course. At other times of the year they must either take a course or remain in the school during lesson times. The minimum age for adult in charge is 21.



PRIVATE LESSONS & MINI GROUPS

After group classes, we can also arrange private lessons for children, to concentrate on a particular skill or language area. We can also offer private lessons and Mini Group tuition for children at other times of the year. Please ask for more details.



TRINITY SPOKEN ENGLISH TEST

Children and adults on a course of 2 weeks or more in the summer have the option to take a Trinity Spoken English test, an internationally recognised examination, suitable for all levels.



YOUR FREE TIME

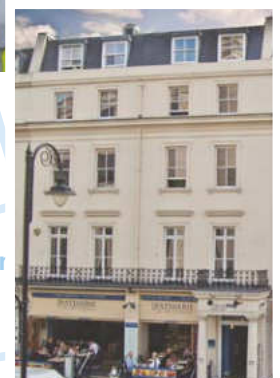
Classes are in the mornings - families are free in the afternoons to enjoy London's many attractions and to take part in a special activity programme, 2 or 3 days a week.

London Family Programme

Family study holiday in the heart of London. Courses for children aged 6-16 and optional courses for parents and other family members. We can arrange accommodation in homestays, studios and apartments and the whole family can enjoy an activity programme. Programmes available in spring, summer, autumn and winter.

"We all enjoyed our course and really improved our English. The school is very friendly and looked after our family very well."

Alejandro Artiles Vizcaino,
Gema Nuez and family,
Spain



FK Kensington

Family Junior Morning

This fun course is designed for young learners. The emphasis is on spoken English and communication. Imaginative activities and group project work encourage speaking and rapid learning and there is a visit to a local place of interest. There are also sports on Friday afternoon in Hyde Park.

Family Adult Morning

While their children are at school, parents and other family members have the option of taking a course at Frances King. Parents can choose from Club 8 Professional with small groups of 5-8 students, minimum age 24 or Standard General English, with up to 14 students.

Family Junior Day School

This all day programme is for ages 12-16 in summer. Participants join the Family Junior Morning Course and in the afternoon there are activities, excursions and projects. Children should be dropped off at 8.45 and collected at 17.00. Students must bring a packed lunch and a travel card.

COURSE FACTS

	FAMILY JUNIOR MORNING	FAMILY ADULT MORNING	FAMILY JUNIOR DAY SCHOOL
Class size	Average 12 / maximum 15	Standard - 14 Club 8 Professional - 8	Average 12 / maximum 15
Minimum level	A1	Standard - A2 Club 8 Professional - B1	A2
Lessons/week	20	20	20 + projects/activities
Hours/week	16h 40m	16h 40m	16h 40m + projects/activities
Timetable	<u>Monday to Friday</u> 9.00-13.00	<u>Monday to Friday</u> 9.00-12.50	<u>Monday to Friday</u> 9.00-17.00

A1 Beginner A2 Elementary B1 Intermediate B2 Upper Intermediate C1 Advanced C2 Proficiency

START DATES

Winter Programme 2022

January 4 (1-4 weeks) ①
January 10 (1-3 weeks)
January 17 (1-2 weeks)
January 24 (1 week)

① Week commencing January 4: 16 lessons/week. Monday January 3 is a public holiday.

Spring Programme 2022

March 21 (1-6 weeks)
March 28 (1-5 weeks)
April 4 (1-4 weeks)
April 11 (1-3 weeks) ①
April 18 (1-2 weeks) ②
April 25 (1 week)

① Week commencing April 11: 16 lessons/week. Friday April 15 is a public holiday.

② Week commencing April 19: 16 lessons/week. Monday April 18 is a public holiday.

Summer Programme 2022

June 13 (1-11 weeks)
June 20 (1-10 weeks)
June 27 (1-9 weeks)
July 4 (1-8 weeks)
July 11 (1-7 weeks)
July 18 (1-6 weeks)
July 25 (1-5 weeks)
August 1 (1-4 weeks)
August 8 (1-3 weeks)
August 15 (1-2 weeks)
August 22 (1 week)

Autumn Programme 2022

October 10 (1-3 weeks)
October 17 (2-3 weeks)
October 24 (1 week)

Winter Programme 2023

January 3 (1-4 weeks) ①
January 9 (1-3 weeks)
January 16 (1-2 weeks)
January 23 (1 week)

① Week commencing January 3: 16 lessons/week. Monday January 2 is a public holiday.



London Family Programme

Accommodation

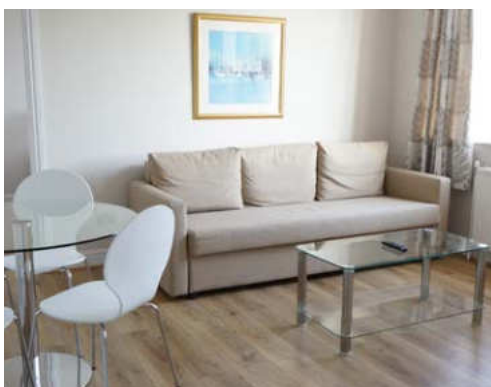
Studios and Apartments

If you prefer to be independent we offer studios, apartments, residences and hotels. Our apartments and studios provide the comfort of a hotel at a lower price, include private bathrooms and kitchens and are in excellent locations for our schools. We can also offer a range of 3, 4 and 5 star hotels in central London. Please contact us for more information.



1 Citadines (South Kensington) ****

- Modern, stylish, self-contained studios (for 2 people) and 1 bedroom apartments (for 2-4 people)
- Available all year, minimum stay 1 week
- Location: zone 1, 🚇 Gloucester Road, less than 5 minutes' walk to Frances King Kensington, near fashionable restaurants, cafes and bars and a short walk to Hyde Park, Kensington Gardens and world-famous museums



2 Chelsea Cloisters ***

- Attractively designed, self-contained serviced studios (for 2 people with double bed) and 1 bedroom (for 1-3 people) and 2 bedroom apartments (for 2-4 people with 2 double beds)
- Available all year, minimum stay 1 week
- Location: zone 1, 🚇 South Kensington, about 15 minutes' walk to Frances King in Kensington, near the fashionable shops, cafes and restaurants of Chelsea and a short walk to world-famous museums



3 Citadines (Trafalgar Square) ****

- Self-contained 2 bedroom apartments (for 2-6 people)
- Available all year, minimum stay 1 week
- Location: zone 1, 🚇 Embankment, less than 20 minutes by underground to Frances King Kensington. Located in the heart of the West End, within an easy walk of a huge number of attractions, entertainment venues, restaurants and shops



Self Catering



Free WiFi



Private bathroom



Private Kitchen



Free coffee



Gym



Self Catering



Free WiFi



Private bathroom



Private Kitchen



Self catering



Free WiFi



Private bathroom



Private Kitchen



Business Corner



Breakfast Room



Locations

🏠 Frances King - Kensington

1 Citadines - South Kensington

2 Chelsea Cloisters

3 Citadines - Trafalgar Square

Quality Ratings

- ★★ Standard
- ★★★ Premium
- ★★★★ Deluxe

Prices for studios and apartments are for bookings of 7 nights or more, 1-6 night prices on request.

We can offer a variety of accommodation suitable for families, all located in excellent and safe locations within walking distance, or well connected with public transport to our school.

Homestay

Staying in a Homestay is by far the most cost-effective way of living in London. Our hosts are friendly and welcoming and located in residential areas approximately 15-45 minutes from the school by public transport. Staying with a homestay is also the best way to learn about English life and culture and the opportunity for you and your family to practise your English.



Standard Homestay **

- Good homes in pleasant areas with kind hosts
- Location: zone 2 and 3
- Choose between:
 - Single Bed and Breakfast
 - Twin/double Bed and Breakfast
 - Single Half-board
 - Twin/double Half-board



Shared bathroom

Premium Homestay ***

- Superior homes in excellent areas
- Location: zone 1-3
- Choose between:
 - Single Bed and Breakfast
 - Twin/double Bed and Breakfast
 - Single Half-board
 - Twin/double Half-board



Shared bathroom

OR



Private bathroom

Hotels



Hotels

Our 3,4 and 5 star hotels, offering breakfast every day, are carefully selected for good value and quality and are close to our schools. Prices may vary depending on the time of year.



Family Programme London 2022

Registration fee £125 per family

Code	Course	Lessons per week	Price per week			Ages	Minimum level
			1-3	4-7	8-11		
Family Programme							
FJ	Family Junior	20	£405	£350	£325	6-16	A1
FAP	Family Adult - Club 8 Professional	20	£465	£385	£355	24 and over	B1
FAS	Family Adult - Standard General English	20	£350	£315	£292	16 and over	A2
FJD	Family Junior Day School (Summer only)	20 plus afternoon activities	£825	£765	£730	12-16	A2

WINTER PROGRAMME 2022

January 4 (1-4 weeks) ❶
January 10 (1-3 weeks)
January 17 (1-2 weeks)
January 24 (1 week)

❶ Week commencing January 4:
16 lessons/week. Monday
January 3 is a public holiday.

SPRING PROGRAMME 2022

March 21 (1-6 weeks)
March 28 (1-5 weeks)
April 4 (1-4 weeks)
April 11 (1-3 weeks) ❶
April 18 (1-2 weeks) ❷
April 25 (1 week)

❶ Week commencing April 11:
16 lessons/week. Friday April
15 is a public holiday.

❷ Week commencing April 19:
16 lessons/week. Monday April
18 is a public holiday.

SUMMER PROGRAMME 2022

June 13 (1-11 weeks)
June 20 (1-10 weeks)
June 27 (1-9 weeks)
July 4 (1-8 weeks)
July 11 (1-7 weeks)
July 18 (1-6 weeks)
July 25 (1-5 weeks)
August 1 (1-4 weeks)
August 8 (1-3 weeks)
August 15 (1-2 weeks)
August 22 (1 week)

AUTUMN PROGRAMME 2022

October 10 (1-3 weeks)
October 17 (2-3 weeks)
October 24 (1 week)

WINTER PROGRAMME 2023

January 3 (1-4 weeks) ❶
January 9 (1-3 weeks)
January 16 (1-2 weeks)
January 23 (1 week)

❶ Week commencing January
3: 16 lessons/week. Monday
January 2 is a public holiday.

Code	Accommodation type	Star rating	Price
Homestays			
A2	Standard Homestay: Single Bed and Breakfast	**	£162
A3	Standard Homestay: Twin/Double Bed and Breakfast	**	£144 / week / person
A5	Standard Homestay: Single Half-Board	**	£223/ week
A6	Standard Homestay: Twin/Double Half-Board	**	£182 / week / person
A7	Premium Homestay: Single Bed and Breakfast	***	£200 / week
A8	Premium Homestay: Twin/Double Bed and Breakfast	***	£168 / week / person
A10	Premium Homestay: Single Half-Board	***	£260 / week
A11	Premium Homestay: Twin/Double Half-Board	***	£229 / week / person
A12	Premium Homestay: Private Bathroom Supplement	***	£47 per week / room
Studios and Apartments (prices are per night per studio / apartment)			
A410	Chelsea Cloisters: Studio (1-2 people), Self-Catering	***	£109
A411	Chelsea Cloisters: 1 Bedroom Apartment (1-3 people), Self-Catering	***	£142
A412	Chelsea Cloisters: 2 Bedroom Apartment (2-5 people), Self-Catering	***	£208
A910	Citadines: Studio (1-2 people), Self-Catering	****	£154
A912	Citadines: 1 Bedroom Apartment (1-4 people), Self-Catering	****	£218
A293	Citadines (Trafalgar Square): 2 Bedroom Apartment (2-6 people), Self-Catering	****	£314
Hotels			
Prices on request. Please supply arrival and departure dates and preferred star rating.			

Transfers (from/to)	Price / Single Transfer		
	1-3 people travelling to same address	Supplement for health safety, 1-3 people*	4-7 people travelling to same address
Heathrow	£95	£25	£120
Gatwick	£120	£40	£160
Stansted/Luton	£130	£30	£160
London City	£100	£30	£130
London Railway Stations	£90	£30	£120

Double fares apply on public holidays and December 24-26, 27, 28, 31; January 2 2023

FAMILY PROGRAMME NOTES

Visa document courier £45

Optional medical, travel and course insurance £5.53/week
Book at: www.guard.me/francesking

Optional Trinity Examination fee £140

Courses fees include

- placement test and assessment
- welcome pack
- school certificate
- some optional activities

Family Junior Day School - fees also include

- supervision 8.45-17.00
- projects, activities, excursions in afternoons
- any entrance charges

Course fees do not include

- bank charges
- lunch
- travel and excursions
- some optional activities

Class size

Junior Course - maximum 15
Adult Course - maximum 8/14

Timetable

1 lesson = 50m
20 lessons = 16h 40m

Monday-Friday
9.00-13.00 Family Adult
9.00-12.50 Family Junior
9.00-17.00 Family Junior Day School

Family Junior Day School

Monday-Friday
Family Junior 9.00-12.50
Lunchtime 13.00-14.00
Activities, excursions 14.00-17.00

Students must bring a packed lunch with drink every day and a travel card for Zone 1 & 2.

ACCOMMODATION NOTES

Homestay supplements

- Special diets: £37/week/person
- Homestay bookings which include weeks commencing December 19, 26: £31/week/person

Arrival/departure

Accommodation is booked from Saturday to Saturday or Sunday to Sunday. Apartments, studios and hotels can be booked to start on other days.

Studio and apartment prices are for bookings of 7 days or more, 1-6 night prices on request.

Extra nights

Subject to availability at 1/7th of weekly fee.

Frances King Quality Ratings

** Standard
*** Premium
**** Deluxe

Homestay travel zone and times

Premium 15-45 minutes (zones 1-3)
Standard 30-45/50 minutes (zones 2, 3)

TRANSFER NOTES

Supplement for transfer 23.00-5.00

1-3 people: £15, 4-7 people: £25.

Waiting time

2 hours included. Extra time: 1-3 people £25 per 30 minutes, 4-7 people £40 per 30 minutes.

Arrival time

It is not always possible to arrive at accommodation before 7.00 or after 22.00. Please check with us before making travel arrangements.

Enrolment details, terms and conditions 2022

London Family Programme

ENROLMENT

You can book in the following ways:

1. Online at www.francesking.com
2. By email to london@francesking.com
Download the Family Programme Enrolment Form from www.francesking.com/school-of-english-london/more-information/downloads
3. Visit our school
77 Gloucester Road, London SW7 4SS
Tel: 020 7870 6533
 - Take a test, pay a deposit and reserve a place on the next course
 - Please bring your passport/ID card with you to make a booking

PAYMENT

You must send payment with your enrolment. We can confirm your course or accommodation booking and send a letter of confirmation when you or your company have paid:

- Registration fee of £125 per family and a deposit per person of
 - £200 if you want to book a course
 - £500 if you want to book a course and accommodation
 - 15 days before your arrival you need to pay the balance of your course and accommodation fees
 - Deposits are non-refundable and non-transferable
- Payment in full, in the following cases:
 - If you are applying for a Student Visa
 - If you are booking less than 15 days before arrival
 - Documents for visa applications will not be issued unless students have paid course and accommodation fees in full

You can pay by:

- Credit Card (Visa or MasterCard). Please request our card authorisation form or pay on line at:
 - <https://secure.francesking.com/payment/page010.aspx?city=LON>
It is safe to give your credit card details on our secure server.
- International Bank Transfer to our bank:

Nat West Bank

Business Education Ltd, trading as Frances King School of English, National Westminster Bank plc, Piccadilly, London W1A 2DG
Bank sort code: 56 00 03
Account number: 17054524
IBAN BIC number (SWIFT): NWBKGB2L
IBAN number:
GB62 NWBK 5600 0317 0545 24

- Frances King is not responsible for any bank transfer charges. Payment must be received in full – please instruct your bank to remit the full amount plus additional funds to cover ALL bank transfer charges.
 - You need to email a copy of the bank transfer with your Enrolment Form.
 - Please make certain that your name appears clearly on the bank transfer.
- Sterling cheque drawn on an British bank account

CONFIRMATION

When we receive your Enrolment Form and payment, we check the availability of your course and accommodation and send your confirmation documents by email or post within 3-4 working days. We can also send your documents by courier (DHL): £45/courier. We will contact you if the course or accommodation you want is not available and offer you an alternative.

If you would like us to arrange accommodation before your pre-entry visa is issued, you need to agree to our Accommodation Cancellation Policy, otherwise we will not arrange your accommodation until a visa has been issued.

If you want to book an airport transfer (either a single or return) you must email us your flight details and phone number. We will then confirm that we have booked this for you.

You must inform your homestay or other accommodation provider of your arrival time. If you do not do this, we cannot guarantee that your host/accommodation provider will be there to meet you.

INSURANCE

Before you arrive in the UK, you should take out insurance for your own financial and personal security. EU nationals should bring their European Health Insurance Card (EHIC) which allows you access to health care services.

- You can take out your own insurance or the International Student Policy offered by Guard.Me Insurance

For further details, please visit:

<http://www.francesking.com/school-of-english-london/more-information/downloads>

COURSE INFORMATION

Passport/ID card

All students are required to present their passport/ID card on their first day and the school will retain a copy.

Contact details

You are required to provide, and keep up-to-date, your contact details in London and next of kin contact details in your own country and any other changes of circumstance that would affect your visa.

Private lessons

Requests for a change to your timetable must be made 48 hours in advance (during office hours, 9.00-17.00, Monday- Friday).

Photography/videos

Sometimes Frances King or our representatives take photographs and videos during our courses which may be used for promotional purposes. Please advise us at the time of booking if you do not wish to appear in any promotional material. It is your responsibility to absent yourself when photographs are being taken or videos made.

Unless directed by your teacher, classes cannot be filmed or otherwise recorded without the permission, in writing, of a Director, Principal or Academic Director. Teachers may organise filming and recording to enhance your educational experience.

Public holidays

There is no reduction in course fees when a course includes a public holiday.

Travel to/from school

Students must be accompanied to and from the campus by an adult of 21 years or over (unless 14 or over with parent/guardian permission). Students should be dropped off at 8.45 and collected at 13.00 (morning class only) or 17.00 (day school).

Cost of activities

Family Junior/Adult - any entrance charges not included. See details in More Information/Downloads on our website for upcoming and current Activity Programmes.

Day School - entrance charges included.

CANCELLATION

a) Cancellation of group courses

Before arrival: if you want to cancel your booking before starting your course or before arrival in the UK, you must give notice in writing. We will refund all fees minus the Registration fee £125/family and the deposit: £200/person.

Before arrival when a student is refused a visa: if you want to cancel your booking before arrival in the country, you must send us a copy of your visa refusal letter issued by the respective Embassy/Consulate. We will refund all course fees less registration fee of £125/family.

After arrival: if you cancel or curtail your course after arrival in the country, there is no refund in any circumstances.

b) Cancellation of Private Lessons

- You must give 1 week's notice in writing. You may apply for a credit for the unused part of the course. This may be used as part-payment towards any Frances King course within 1 year.
- To postpone lessons you must give 48 hours' notice (during office hours 9.00 -17.00, Monday-Friday). All late cancellations are charged at the full rate.

c) Cancellation of bookings made at a distance

For course bookings made 'at distance' (e.g. via our website, telephone, email), you have the right to cancel, with a full refund of monies paid, without giving a reason, within 14 days (the Cancellation Period) of our confirmation. Cancellation must be made in writing by post or email within the Cancellation Period. We will not start providing services to you during the Cancellation Period unless you request us to do

so in writing. We will refund fees paid within 14 days of the date of your cancellation request. In the event that you have confirmed in writing that you wish us to start providing services within the Cancellation Period, we will deduct from the refund, a reasonable sum for the services provided, based on the proportion of the course undertaken.

d) Cancellation of accommodation

Before arrival: if you want to cancel your accommodation before arrival in the UK you must give notice in writing. We will refund all fees minus the Accommodation Deposit, £300/person unless the accommodation fees for the notice period exceed that amount. If so you will be charged £300/person plus the difference. This also applies to students whose accommodation has been confirmed by the school and have had their visa granted.

Before arrival when a student is refused a visa: if you want to cancel your booking before arrival in the country, you must send us a copy of your visa refusal letter issued by the respective Embassy/Consulate. All accommodation fees will be refunded less an administration charge of £125/family, provided the correct notice to cancel accommodation is given. If notice is insufficient you will be charged for the notice period. See notice period (below) to cancel accommodation.

After arrival: if you cancel or curtail your accommodation after arrival in UK, you will be charged a cancellation fee of £75. The notice period required varies according to your accommodation type. See Notice Period to cancel accommodation below. There is no refund for this period.

e) Non-arrival

In case of non-arrival on booked dates, when the school has not received notice of cancellation in advance, there will be no refund or credit of course or accommodation fees.

f) Refunds

Course and accommodation refunds may take up to 60 days to process. Refunds cannot be processed until the school has been paid in full for all services booked. Refunds will only be made to the person or organisation that paid in the first instance.

NOTICE PERIOD TO CANCEL ACCOMMODATION

Providers may vary notice periods during the year. If there is a change, we will inform you when you book. You must give notice as below, "the notice period", to cancel accommodation before arrival, otherwise you must pay for the period.

1 week's notice: Homestays

24 hours' notice: Hotels

Citadines Studio & Apartments: 5 days' notice is required to cancel a stay of 7-29 days otherwise a cancellation fee of 4 nights will be charged. 10 days' notice is required to cancel a stay of 30+ nights, otherwise a cancellation fee of 10 nights will be charged.

Chelsea Cloisters Studios & Apartments: 7 days' notice is required to cancel, otherwise a fee of 2 nights is charged. No refund is given if a stay is shortened or cancelled after arrival.

ACCOMMODATION INFORMATION

In arranging accommodation Frances King will be acting as agent for the supplier, as principal or a sub-agent. The status of Frances King in relation to specific accommodation will be explained on request. Frances King is not responsible for payment of any tax claimed from students by UK or foreign authorities.

TRANSFER TERMS AND CONDITIONS

- Flight details and your mobile telephone number must be received in writing before 14.00 (UK time) on the Friday before arrival
- To cancel or change an airport transfer you must inform us in writing 12 hours before the flight arrival or departure time or you will be charged for the transfer
- For last minute changes or cancellations, please phone +44 (0) 7768 325 391
- A supplement of £15 will be charged for an airport transfer service between 23.00- 05.00. A supplement will also be charged for airport transfers on public holidays (and during the Christmas period) - please ask for prices
- Waiting time of 2 hours is included in the transfer price. If you do not contact the driver within 2 hours of the flight arrival time, the driver will leave the airport and any request for a further transfer will be charged at the full rate. Waiting time starts from the scheduled time of arrival, unless the flight is early.
- Please read your airport transfer confirmation documents carefully before departure as they include important baggage allowance and arrival information

COMPLAINTS AND CONDUCT

Complaints

Problems and complaints with courses, accommodation and other services should be brought to our attention immediately so that we can help.

Conduct

Frances King reserves the right to cancel a student's course and accommodation in the event of misconduct or unsatisfactory behaviour. Students will be responsible for all costs arising.

PERSONAL INFORMATION

We will keep your information in electronic and paper format. Details will be passed to airport transfer accommodation and other providers as needed. Information will also be passed to UK visa and immigration and other government authorities if required.

FORCE MAJEURE

Frances King School of English is not liable in the event of the school being unable to supply services to which it is contractually bound resulting from causes outside the school's control, such as, but not limited to, natural disasters, labour disputes, government action, pandemics and the like. Refunds will not be made in such circumstances.

For details of our other Programmes, please see our website or ask for a brochure.



BEG

Frances King School of English is a part of the Business Education Group, which also includes Quest Professional in London.

Quest Professional
Training and Recruiting for Business

Providing school leavers and recent graduates with the skills employers are looking for.

www.questprofessional.co.uk

Educational Tour Operator



For more information please contact:

Frances King School of English
77 Gloucester Road
London SW7 4SS
United Kingdom
Email: london@francesking.com
Tel: +44 (0)20 7870 6533
www.francesking.com

Join us on social media

You can find interesting content in our social media platforms such as photos and videos of the school and activities organised, testimonials, special offers, English tips, assistance and a lot more.

Join and keep up-to-date with our latest news or share your experience with us.

We would love to welcome you to our community!



ACCREDITATIONS

Accredited by the
BRITISH COUNCIL
for the teaching
of English in the UK

Frances King School of English - London is accredited by The British Council for the teaching of English as a Foreign Language.

MEMBERSHIPS



Frances King is a member of Quality English, the organisation of leading independent English language schools.



Frances King is also a member of IALC, the International Association of Language Centres.



Frances King School of English - London is a member of English UK, the organisation of accredited teaching establishments.

49

Years'
Experience
in Teaching

Frances**King**
School of English



2022

**Dublin Family
Programme**

including enrolment
details and fees

We'll get you
speaking English





LOCATION

Our summer school for adults and families is in an historic school building in the central city with modern teaching facilities, the perfect location for a summer stay in Dublin.

- Nearby attractions include the National Gallery, the Natural History Museum, Trinity College and much more.
- Merrion Square Park is a short walk away, It hosts a weekly international food market and regular exciting events for students.
- Dublin's best cafes, bars and restaurants are on our doorstep.



AGES

Children of ages 6-16 are accepted. A parent or guardian of a 6 year old must also take a programme or remain in the school during lesson times. The minimum age for adult in charge is 21.



PRIVATE LESSONS

After group classes, we can also arrange private lessons for children, to concentrate on a particular skill or language area.



YOUR FREE TIME

Classes are in the morning – families are free in the afternoon to enjoy Dublin's many attractions and to take part in the special family activity programme 3 days a week or join the adult activity programme which runs every day.

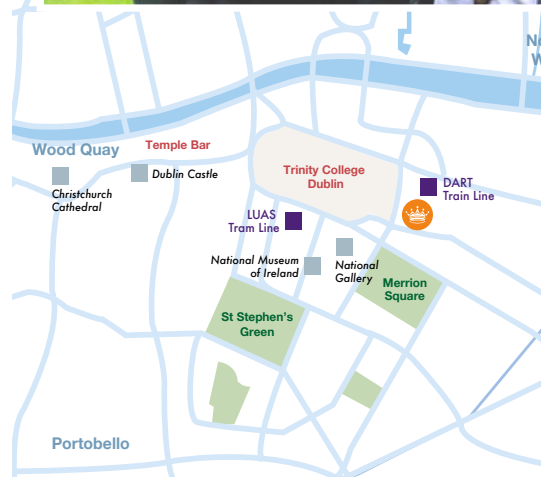
DAY SCHOOL FOR TEENAGERS

For children aged 12-17, we can also offer our Dublin Teenager Programme Day School in Dalkey.

Dublin Family Programme

Family study holiday in the heart of Dublin. Courses for children aged 6-16 and optional courses for parents and other family members. We can arrange accommodation in homestays, studios and apartments and the whole family can enjoy an activity programme. Programmes available in summer and take place in a beautiful part of the central city.

"On my first day I was nervous, but very quickly I could see that the atmosphere at Frances King was friendly and that the school was full of people who were ready to help and make me feel comfortable"
Chiara Angeloni (9 years)
in Dublin with her brother Leonardo and family, Italy



 **Frances King at CBS**

Dublin Family Junior

This fun course is designed for young learners. The emphasis is on spoken English and communication. Imaginative activities and group project work encourage speaking and rapid learning.

Dublin Family Adult

While their children are at school, parents and other adult family members have the option of taking a course at Frances King. Our adult programmes focus on spoken English and there is also concentrated language skill practice.

COURSE FACTS

	DUBLIN FAMILY JUNIOR	DUBLIN FAMILY ADULT
Class size	Average 12 / maximum 15	Average 12 / maximum 15
Minimum level	A1	A1
Lessons/week	20	20
Hours/week	16h 40m	16h 40m
Timetable	<u>Monday to Friday</u> 9.00-13.00	<u>Monday to Friday</u> 9.00-12.50

A1 Beginner A2 Elementary B1 Intermediate B2 Upper Intermediate C1 Advanced C2 Proficiency
The Family Programme is not covered by ACELS recognition.

START DATES

Summer Family Programme 2022

June 27 (1-8 weeks)
July 4 (1-7 weeks)
July 11 (1-6 weeks)
July 18 (1-5 weeks)

July 25 (1-4 weeks)
August 2 (1-3 weeks) ¹
August 8 (1-2 weeks)
August 15 (1 week)

¹ Week commencing August 2: 16 lessons/week. August 1 is a bank holiday.



Dublin Family Programme

Accommodation

Studios, Apartments and Hotels

We offer a wide range of high quality serviced studios and apartments located in the city centre within 30 minutes walking distance of our school. These offer more independent living for your family and the opportunity to experience Dublin as a local. They are fully serviced, bed linen is changed and the studio or apartment cleaned weekly. These options offer the comfort of a hotel at lower prices and include a private bathroom and kitchen.



1 Studios ***

- High quality self-contained studios (1-2 people) offering single, double and twin beds
- Early booking is advised for the summer period, minimum stay 1 week
- Location: multiple locations, all within walking distance of Frances King School and Dublin city centre



Self Catering



Free WiFi



Private bathroom



Private Kitchen



2 Apartments ***

- Luxurious serviced 1, 2 and 3 bedroom apartments and houses (1-6 people) in excellent areas close to the school
- Early booking is advised for the summer period, minimum stay 1 week
- Location: multiple locations, all within walking distance of Frances King School and Dublin city centre



Self Catering



Free WiFi



Private bathroom



Private Kitchen



Hotels *** **** *****

- A selection of hotels within walking distance of the school
- 3, 4 or 5 star
- Early booking is advised for the summer period, minimum stay 1 week



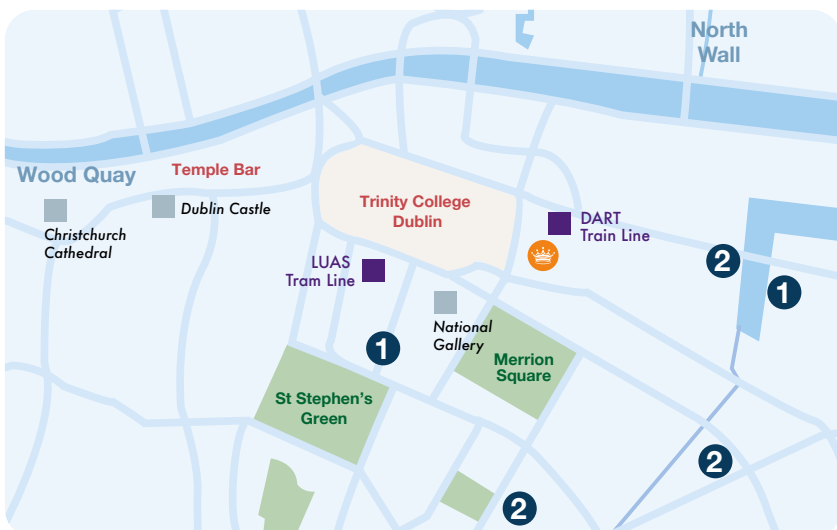
Breakfast



Free WiFi



Private bathroom



Locations



Frances King at CBS

1 Studios

2 Apartments

Quality Ratings

** Standard

*** Premium

**** Deluxe

***** Luxury

We can offer a variety of accommodation suitable for families, all located in excellent and safe locations within walking distance, or well connected with public transport to our school.

Homestay

Our homestays are friendly and welcoming and located in residential areas with a travel time of approximately 20-50 minutes to the school. Staying with a homestay is the best way to learn about Irish life and culture and the opportunity for you and your family to practise your English. Our homestays are half-board and offer breakfast and dinner every day and lunch in the weekend.



Standard Homestay **

- Good homes in pleasant areas with kind hosts
- Location: Dublin 4, 6, 6W, 14, 16, 18 and South County Dublin
- Choose between:
 - Single Half-board
 - Twin/double Half-board

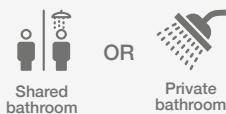


Shared bathroom

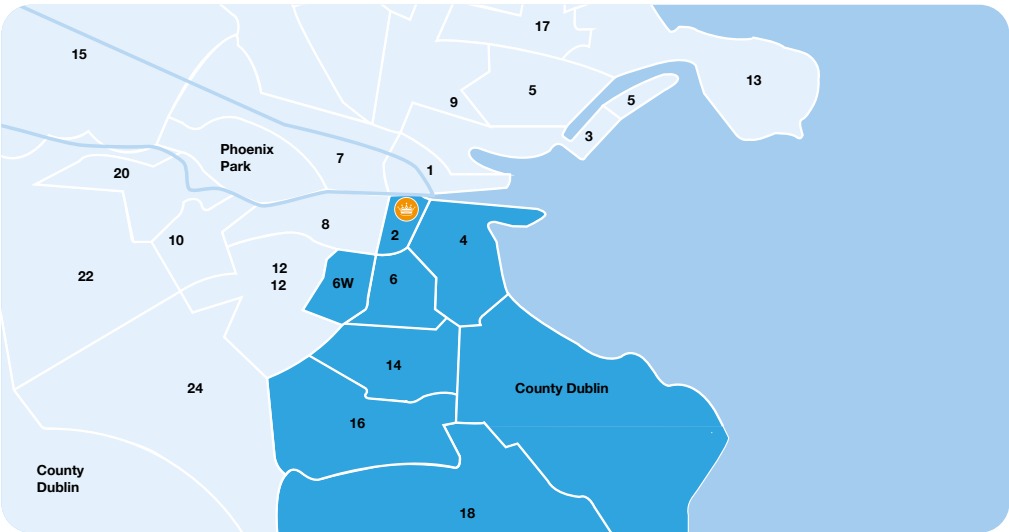


Premium Homestay ***

- Superior homes in excellent areas
- Location: Dublin 4, 6, 6W and South County Dublin
- Choose between:
 - Single Half-board
 - Twin/double Half-board



Shared bathroom OR Private bathroom



Family Programme Dublin 2022

Registration fee €125 per family

Code	Course	Lessons per week	Price per week			Ages	Minimum level
			1-3	4-7	8		
Family Programme							
FJ	Family Junior	20	€306	€289	€265	6-16	A1
FA	Family Adult	20	€259	€248	€235	Adults of all ages; adult in charge 21	A1

SUMMER PROGRAMME 2022

June 27 (1-8 weeks)	July 25 (1-4 weeks)
July 4 (1-7 weeks)	August 2 (1-3 weeks) ❶
July 11 (1-6 weeks)	August 8 (1-2 weeks)
July 18 (1-5 weeks)	August 15 (1 week)

❶ Week commencing August 2: 16 lessons/week. August 1 is a bank holiday.

FAMILY PROGRAMME NOTES

Visa document courier €50

Optional medical, travel and course insurance

To book your insurance contact
dublin@francesking.com

Courses fees include

- placement test and assessment
- welcome pack
- school certificate
- some optional activities

Course fees do not include

- bank charges
- travel and excursions
- some optional activities
- course book, €35 for adult course of 3 weeks or longer

Class size

Maximum 15

Timetable

1 lesson = 50m

20 lessons = 16h 40m

Monday-Friday

9.00-12.50 Family Adult

9.00-13.00 Family Junior

ACCOMMODATION NOTES

Special diets in Homestay

€50/week/person

Arrival/departure

Accommodation is booked from Saturday to Saturday or Sunday to Sunday. Apartments, studios and hotels can be booked to start on other days.

Extra nights

Subject to availability at 1/7th of weekly fee.

Frances King Quality Ratings

** Standard
*** Premium

Code	Accommodation type	Star rating	Price
Homestays			
D5	Standard Homestay: Single, Half-Board	**	€219 / week
D6	Standard Homestay: Twin/Double, Half-Board	**	€203 / week / person
D1	Premium Homestay: Single, Half-Board	***	€257 / week
D2	Premium Homestay: Twin/Double, Half-Board	***	€235 / week / person
D3	Premium Homestay: Private Bathroom Supplement	***	€60 / week / room
Studios and Apartments			
D901	Studios: 2 people, Self-Catering	**	From €850 / week / studio
D902	Serviced Apartments: 1 Bedroom, 1-3 people, Self-Catering	***	From €1050 / week / apartment
D903	Serviced Apartments: 2 Bedrooms, 2-4 People, Self-Catering	***	From €1300 / week / apartment
D904	Serviced Apartments: 3 Bedrooms, 3-6 People, Self-Catering	***	From €1600 / week / apartment
Hotels			
Prices on request. Please supply arrival and departure dates and preferred star rating.			

When the price is stated as "from", this is the lowest price possible at quiet times. At busy times, such as peak summer, and for late bookings, prices will be higher. Please check with us.

Transfers (from/to)	Price / Single Transfer	
	1-2 people travelling to same address	3-5 people travelling to same address
Dublin Airport	€95	€160

TRANSFER NOTES

Supplement for transfer 23.00-5.00 €25.

Waiting time

1 hour and 15 minutes included. Extra time: car parking charge €9/hour plus €10 for every 15 minutes.

Arrival time

It is not always possible to arrive at accommodation before 7.00 or after 22.00. Please check with us before making travel arrangements.

Enrolment details, terms and conditions 2022

DUBLIN FAMILY PROGRAMME

ENROLMENT

You can book in the following ways:

1. Online at www.francesking.com
2. By email to dublin@francesking.com

Download the Family Programme Enrolment Form from <https://www.francesking.com/school-of-english-dublin/more-information>

PAYMENT

You must send payment with your enrolment. We can confirm your course or accommodation booking and send a letter of confirmation when you or your company have paid:

- Registration fee of €125 per family and a deposit per person of
 - €200 if you want to book a course
 - €500 if you want to book a course and accommodation
 - 15 days before your arrival you need to pay the balance of your course and accommodation fees
 - Deposits are non-refundable and non-transferable
- Payment in full, in the following cases:
 - If you are applying for a Student Visa
 - If you are booking less than 15 days before arrival
 - Documents for visa applications will not be issued unless students have paid course and accommodation fees in full

You can pay by:

- Credit Card (Visa or MasterCard). Please request our card authorisation form or pay on line at:
 - Dublin: <https://secure.francesking.com/payment/page010.aspx?city=DUB>
It is safe to give your credit card details on our secure server.
- International Bank Transfer to our bank:

Dublin

Bank of Ireland
Business Education Ltd, trading as Frances King School of English (Ireland) Ltd, Bank of Ireland,
Lower Baggot Street, Dublin 2
Bank sort code: 90 14 90
Account number: 62783119
IBAN BIC Number (SWIFT): BOFIE2D
IBAN number: IE18 BOFI 9014 9062 7831 19

- Frances King is not responsible for any bank transfer charges. Payment must be received in full– please instruct your bank to remit the full amount plus additional funds to cover ALL bank transfer charges.
- You need to email a copy of the bank transfer with your Enrolment Form.
- Please make certain that your name appears clearly on the bank transfer.
- Sterling cheque drawn on an Euro cheque drawn on an Irish bank account.

CONFIRMATION

When we receive your Enrolment Form and payment, we check the availability of your course and accommodation and send your confirmation documents by email or post within 3-4 working days.

We can also send your documents by courier (DHL): €50/courier. We will contact you if the course or accommodation you want is not available and offer you an alternative.

If you would like us to arrange accommodation before your pre-entry visa is issued, you need to agree to our Accommodation Cancellation Policy, otherwise we will not arrange your accommodation until a visa has been issued.

If you want to book an airport transfer (either a single or return) you must email us your flight details and phone number. We will then confirm that we have booked this for you.

You must inform your homestay or other accommodation provider of your arrival time. If you do not do this, we cannot guarantee that your host/accommodation provider will be there to meet you.

INSURANCE

Before you arrive in Ireland, you should take out insurance for your own financial and personal security. EU nationals should bring their European Health Insurance Card (EHIC) which allows you access to health care services.

- You can take out your own insurance or the International Student Policy offered by Guard.Me Insurance

For further details, please visit:

Dublin insurance: <http://www.francesking.com/school-of-english-dublin/more-information/downloads>

COURSE INFORMATION

Passport/ID card

All students are required to present their passport/ID card on their first day and the school will retain a copy.

Contact details

You are required to provide, and keep up-to-date, your contact details in Dublin and next of kin contact details in your own country and any other changes of circumstance that would affect your visa.

Private lessons

Requests for a change to your timetable must be made 48 hours in advance (during office hours, 9.00-17.00, Monday- Friday).

Photography/videos

Sometimes Frances King or our representatives take photographs and videos during our courses which may be used for promotional purposes. Please advise us at the time of booking if you do not wish to appear in any promotional material. It is your responsibility to absent yourself when photographs are being taken or videos made.

Unless directed by your teacher, classes cannot be filmed or otherwise recorded without the permission, in writing, of a Director, Principal or Academic Director. Teachers may organise filming and recording to enhance your educational experience.

Public holidays

There is no reduction in course fees when a course includes a public holiday.

Travel to/from school

Students must be accompanied to and from the campus by an adult of 21 years or over (unless 14 or over with parent/guardian permission). Students should be dropped off at 8.45 and collected at 13.00.

Cost of activities

Family Junior/Adult - any entrance charges not included. See details in More Information/Downloads on our website for upcoming and current Activity Programmes.

CANCELLATION

a) Cancellation of group courses

Before arrival: if you want to cancel your booking before starting your course or before arrival in Ireland, you must give notice in writing. We will refund all fees minus the Registration fee €125/family and the deposit: €200/person.

Before arrival when a student is refused a visa: if you want to cancel your booking before arrival in the country, you must send us a copy of your visa refusal letter issued by the respective Embassy/Consulate. We will refund all course fees less registration fee of €125/family.

After arrival: if you cancel or curtail your course after arrival in the country, there is no refund in any circumstances.

b) Cancellation of Private Lessons

- You must give 1 week's notice in writing. You may apply for a credit for the unused part of the course. This may be used as part-payment towards any Frances King course within 1 year.
- To postpone lessons you must give 48 hours' notice (during office hours 9.00 -17.00, Monday-Friday). All late cancellations are charged at the full rate.

c) Cancellation of bookings made at a distance

For course bookings made 'at distance' (e.g. via our website, telephone, email), you have the right to cancel, with a full refund of monies paid, without giving a reason, within 14 days (the Cancellation Period) of our confirmation. Cancellation must be made in writing by post or email within the Cancellation Period. We will not start providing services to you during the Cancellation Period unless you request us to do so in writing. We will refund fees paid within 14 days of the date of your cancellation request. In the event that you have confirmed in writing that you wish us to start providing services within the Cancellation Period, we will deduct from the refund, a reasonable sum for the services provided, based on the proportion of the course undertaken.

d) Cancellation of accommodation

Before arrival: if you want to cancel your accommodation before arrival in Ireland you must give notice in writing. We will refund all fees minus the Accommodation Deposit, €300/person unless the accommodation fees for the notice period exceed that amount. If so you will be charged €300/person plus the difference. This also applies to students whose accommodation has been confirmed by the school and have had their visa granted.

Before arrival when a student is refused a visa: if you want to cancel your booking before arrival in the country, you must send us a copy of your visa refusal letter issued by the respective Embassy/Consulate. All accommodation fees will be refunded less an administration charge of €125/family, provided the correct notice to cancel accommodation is given. If notice is insufficient you will be charged for the notice period. See notice period (below) to cancel accommodation.

After arrival: if you cancel or curtail your accommodation after arrival in Ireland, you will be charged a cancellation fee of €75. The notice period required varies according to your accommodation type. See Notice Period to cancel accommodation below. There is no refund for this period.

e) Non-arrival

In case of non-arrival on booked dates, when the school has not received notice of cancellation in advance, there will be no refund or credit of course or accommodation fees.

f) Refunds

Course and accommodation refunds may take up to 60 days to process. Refunds cannot be processed until the school has been paid in full for all services booked. Refunds will only be made to the person or organisation that paid in the first instance.

NOTICE PERIOD TO CANCEL ACCOMMODATION

Providers may vary notice periods during the year. If there is a change, we will inform you when you book. You must give notice as below, "the notice period", to cancel accommodation before arrival, otherwise you must pay for the period.

2 weeks' notice: Serviced Studios and Apartments

1 week's notice: Homestays

24 hours' notice: Hotels

ACCOMMODATION INFORMATION

In arranging accommodation Frances King will be acting as agent for the supplier, as principal or a sub-agent. The status of Frances King in relation to specific accommodation will be explained on request. Frances King is not responsible for payment of any tax claimed from students by Irish or foreign authorities.

TRANSFER TERMS AND CONDITIONS

- Flight details and your mobile telephone number must be received in writing before 14.00 (Irish time) on the Friday before arrival
- To cancel or change an airport transfer you must inform us in writing 12 hours before the flight arrival or departure time or you will be charged for the transfer
- For last minute changes or cancellations, please phone +353 (0) 83 450 2204
- A supplement of €25 will be charged for an airport transfer service between 23.00- 05.00. A supplement will also be charged for airport transfers on public holidays - please ask for prices
- Waiting time of 1¼ hours is included in the transfer price. If you do not contact the driver within 1¼ hours of the flight arrival time, the driver will leave the airport and any request for a further transfer will be charged at the full rate. Waiting time starts from the scheduled time of arrival, unless the flight is early.
- Please read your airport transfer confirmation documents carefully before departure as they include important baggage allowance and arrival information

COMPLAINTS AND CONDUCT

Complaints

Problems and complaints with courses, accommodation and other services should be brought to our attention immediately so that we can help.

Conduct

Frances King reserves the right to cancel a student's course and accommodation in the event of misconduct or unsatisfactory behaviour. Students will be responsible for all costs arising.

PERSONAL INFORMATION

We will keep your information in electronic and paper format. Details will be passed to airport transfer accommodation and other providers as needed. Information will also be passed to Irish via and immigration and other government authorities if required.

FORCE MAJEURE

Frances King School of English is not liable in the event of the school being unable to supply services to which it is contractually bound resulting from causes outside the school's control, such as, but not limited to, natural disasters, labour disputes, government action, pandemics and the like. Refunds will not be made in such circumstances.

For details of our other Programmes, please see our website or ask for a brochure.



BEG

Frances King School of English is a part of the Business Education Group, which also includes Quest Professional in London.

QuestProfessional
Training and Recruiting for Business

Providing school leavers and recent graduates with the skills employers are looking for.

www.questprofessional.co.uk

Educational Tour Operator

For more information please contact:

Frances King School of English

Head Office:

77 Gloucester Road

London SW7 4SS

United Kingdom

Email: london@francesking.com / dublin@francesking.com

Tel: +44 (0)20 7870 6533

Join us on social media

You can find interesting content in our social media platforms such as photos and videos of the school and activities organised, testimonials, special offers, English tips, assistance and a lot more.

Join and keep up-to-date with our latest news or share your experience with us.

We would love to welcome you to our community!



ACCREDITATIONS



Frances King School of English - Dublin is recognised by ACELS, a service of Quality and Qualifications Ireland, for English language teaching.

MEMBERSHIPS



Frances King School of English - Dublin is a member of MEI.