



ENGLISH IN CHESTER

ENGLISH LANGUAGE TRAINING SPECIALISTS



General English Courses

English for International Communication and Study



25+ Courses

English for Everyday Life and the Workplace



Development Courses for Teachers

A Refreshing Approach to Professional Development



Examination Courses

English Courses with Internationally Recognised Qualifications



50+ Courses

Language Holidays for the Over Fifties



Summer Courses for Teenagers

An International Experience with Inclusive Social Programme



Courses for Groups

Short Tailor-made Courses for all Age Groups



ENGLISH IN CHESTER



Stanley Place

The school in Stanley Place has 3 separate centres:

THE LANGUAGE SCHOOL & THE CENTRE FOR CLOSED GROUPS

- 20 classrooms accommodating a maximum of 180 students
- Digital language laboratory with computer room
- Free Internet and Wi-Fi access
- Self-access centre
- Common room
- Coffee room
- Patio garden

LANGUAGE TRAINING CENTRE

- 7 classrooms accommodating a maximum of 35 students
- Lounge with coffee area
- Computers with free Internet and Wi-Fi access

"I have spent my working life developing a school that I'm really proud of."

Richard, Director



English in Chester, established in 1976, is a medium-sized, owner-managed school. We are a team of professional and caring people dedicated to providing a first class experience for every student.

The school has an excellent nationality mix and is known for the personal attention it provides both in and out of the classroom. There is a relaxed and supportive learning environment and a wonderful range of courses to suit different age groups and students with different needs.

We have 3 centres in Stanley Place, a small historic square in the centre of Chester. The school buildings were the homes of Chester's rich and famous people over 200 years ago.

In the summer our junior courses are based on a University of Chester campus within walking distance of central Chester.



OUR MISSION & ACCREDITATION

Our mission is to provide exceptional English language tuition and student services for international clients to enable our learners to operate more effectively and independently in a global context.

We strive for continuous improvement in everything we do in a professional, friendly and supportive environment.

We are accredited by The British Council and inspected by IALC.

Accredited by the
BRITISH COUNCIL
for the teaching
of English in the UK



Choosing your course in Chester



English in Chester is special and there are many reasons for choosing to study with us. Since 1976 we have had more than 20,000 students from over 50 countries. Our courses are suitable for ages 13 to 80+.



"English in Chester is more than a school; it is a learning community where we put our students at the centre of everything we do."

Nigel, Principal

WHY STUDY WITH US?

We are often asked what makes us different. It is a combination of many things:

- We put you at the centre of our thinking
- We are the **only** British Council accredited, year-round school in Chester
- We are recognised as a Centre of Excellence (EL Gazette)
- We are in the centre of a fantastic, very English, city in a wonderful region
- We are easy to get to from our local airports
- We offer an excellent service at sensible prices



Our Office Team



Our Academic Team



Our Teaching Team

STUDENT NUMBERS ON ALL ENGLISH COURSES 2016/17

Italy	25%
Switzerland	15%
Spain	11%
Japan	6%
France	6%
5%	Germany
5%	Poland
4%	Russia
4%	Korea
3%	Czech R.
3%	Argentina
2%	Turkey
2%	Mexico
2%	Taiwan
2%	Saudi Arabia
2%	Sweden
3%	Other

Student nationalities vary from course to course and with the time of year.

OUR COURSES

- **General English Courses (age 16+)**
Improve your communicative ability in our well-structured morning lessons and meet your specific needs with our range of inclusive afternoon options.
- **25+ Courses (age 25+)**
Studying in small classes, become confident using English in everyday life and workplace situations. Courses can be combined with individual tuition.
- **Development Courses for Teachers (age 25+)**
Practical booster courses in English Language Teaching Methodology and CLIL.
- **Examination Courses (age 16+)**
Improve your communicative ability and prepare for the examination relevant to your level and objective: IELTS or Cambridge PET, FCE, or CAE.
- **50+ Courses (age 50+)**
Language holidays combining English practice with an enjoyable, inclusive excursion programme organised and accompanied by local experts.
- **Summer Courses for Teenagers (age 13-16)**
Enjoy interesting lessons, great excursions and fun activities at our small, friendly and safe summer centre.
- **Courses for Groups**
Specially tailored to suit the ages and interests of the students in a group.

General English Courses

English for International Communication and Study

LESSONS/HOURS PER WEEK

28 lessons / 21 hours including:

- 20 core morning lessons
- 8 afternoon option lessons

START DATES

Any Monday for a minimum of 2 weeks

Students at Elementary A1 level who want a 12 week+ course are advised to start on specific dates during the year - contact the school for more information.

AGES

Minimum: 16

Average: 24

Age Range: 16 - 60

Please read the section "Students under the age of 18" in the Terms & Conditions on our website.

CLASS SIZES

Average: 8

Maximum: 12

LEVELS

Elementary to Advanced

(A1 to C1)

Students with a level lower than A1 are only accepted for individual tuition.

SPECIAL FEATURE

A flexible, personalised course structure. Inclusive afternoon options ensure that the specific needs of each student are met.

Improve your English language competence and communicative ability in a supportive and friendly learning environment. Make new friends, discover new places and live the language. Choose from a range of afternoon classes to personalise your course.

Our General English Courses aim to develop your ability to communicate effectively. All aspects of language are covered with an emphasis on speaking and listening. These carefully structured and flexible courses give you an opportunity to select from a range of afternoon classes. This enhances and personalises your learning.



"My progress has been amazing. I can't believe how good it has been. Thank you for this opportunity!"

Damaris, Colombia



COURSE PROGRAMME (MORNING)

All students follow a course-book based morning programme from 09.30 to 13.00 in classes at an appropriate English language level. You will see two teachers; one focussing on general language development and the other on the development of language skills. In all lessons the emphasis is on spoken English.

COURSE PROGRAMME (AFTERNOON)

Afternoon lessons run from 14.15 to 15.45. There is a lot of choice in the programme. You will discuss your needs with the academic team and choose the most appropriate afternoon classes. Afternoon classes are flexible and you can change your options as your needs change. The range of afternoon classes offered will also change from time to time to reflect the overall composition of students in the school. Options include a range of skills and communication classes preparing you to function more effectively in your everyday life, in the workplace and in your academic studies.

General English Courses

INCLUSIVE FEATURES

Tuition fees include:

e-CHESTER

e-Chester is our online guided learning programme. You can have free, full access to e-Chester from the time of booking, during your course and for 6 months after your course.

SELF-ACCESS CENTRE

A teacher is available to help you in our well-equipped centre for an additional 6¼ hours a week.

TUTORIALS

Regular meetings to discuss your progress / study plans.

SAMPLE TIMETABLE (INTERMEDIATE)

Monday	Tuesday	Wednesday	Thursday	Friday
09.30 - 11.00: Language Development				
Travel: Question forming Uses of 'like'	Letter writing: Verb patterns Gerunds and infinitives	Food, Towns and People: Adjectives Collocations	Life Stories: Past simple and present perfect tenses	Telephone English: Phrasal verbs and useful expressions
COFFEE BREAK				
11.30 - 13.00: Skills Development				
Listening & Speaking: Living in a different country	Reading & Speaking: Travel and tourism	Reading & Listening: Describing people and places	Writing & Speaking: News stories	Reading & Speaking: Dream jobs
LUNCH BREAK				
14.15 - 15.45: Option Classes		Free Afternoon	14.15 - 15.45: Option Classes	
<ul style="list-style-type: none"> British Life Vocabulary Conversation Skills Academic Writing 		or <ul style="list-style-type: none"> Supervised self study (13.00-13.45 and 14.15-15.45) Join the writing workshop Film club Join an activity on the social programme 	<ul style="list-style-type: none"> Writing Skills Listening and Discussion Everyday Listening and Speaking Focus on the News IELTS Introduction 	
15.45 - 16.45: Supervised self-study in the self-access centre (optional)			15.45 - 16.45: Supervised self-study in the self-access centre (optional)	

STUDENT NUMBERS 2016/17

Italy	15%
France	13%
Switzerland	11%
Spain	10%
Korea	6%
Japan	5%
4% Turkey	
4% Saudi Arabia	
3% Russia	
3% Czech R.	
Other	26%

- Daily homework is set by morning teachers.
- Students at A1 level have extra General English classes in place of afternoon Option Classes.
- Extra options available in the summer include: English through Drama and Focus on Chester.



"I really enjoyed all the lessons and liked the variety. It was the perfect mixture of studying hard and having fun learning!"

Bigna, Switzerland



25+ Courses

English for Everyday Life and the Workplace

LESSONS/HOURS PER WEEK

30 lessons / 22½ hours

START DATES

Any Monday for between 1 and 6 weeks

If you have only one week we strongly advise you to choose the 25+ Combination Course.

AGES

Minimum: 25
Average: 43
Age Range: 25 - 60

CLASS SIZES

Average: 3
Maximum: 6

LEVELS

Elementary to Advanced (A1 to C1)

Beginners are only accepted for individual tuition.

25+ Courses are short, intensive English language programmes suitable for people who want to study in small classes to develop their English language skills in a general and/or work-related context.

THE 25+ COURSE

The 25+ Course is run in our Language Training Centre. This is a separate, historic building opposite the main school. The centre provides a comfortable learning environment with good training and technology facilities, including iPads, Apple TVs and projectors. There is a computer room and Wi-Fi Internet access throughout the building. Students and trainers can meet, read, relax and enjoy free tea and coffee facilities in the spacious lounge.

The 25+ Course is designed to make the best use of a short period of study and includes:

- English language work with a focus on spoken English and conversation skills
- Lessons designed to develop confidence in using English in both social and professional situations
- An adult environment in a building dedicated to our mature students over the age of 25
- Social events and excursion possibilities to help you make the most of your short stay

You will complete a questionnaire prior to your course and our staff will design the course programme to reflect your needs. With small classes learning is highly effective and personalised.

INCLUSIVE FEATURES ON ALL 25+ COURSES

Tuition fees include:

e-CHESTER

e-Chester is our online guided learning programme. You can have free, full access to e-Chester from the time of booking, during your course and for 6 months after your course.

SELF-ACCESS CENTRE

A teacher is available to help you in our well-equipped centre for up to an additional 4¼ hours a week.

REVIEW SESSIONS

Regular meetings to discuss your progress / study plans.

CHESTER ORIENTATION AND WEEKLY EARLY-EVENING SOCIAL EVENT

Other optional evening and weekend events at cost.



Our 25+ Course Teaching Team

Sample Timetable (Intermediate)

Monday	Tuesday	Wednesday	Thursday	Friday
09.30 - 11.00: Language Development in a Real-Life Context				
Past experiences: Past simple, forming questions, positive and negative responses	Making arrangements: Going to future and present continuous	Transport: Comparatives and superlatives	The best companies to work for: Practise comparatives and giving opinions	Places I have been: First and second conditional
COFFEE BREAK				
11.30 - 13.00: Social & Communication Skills in English				
Travel situations and hotels	Telephone skills	The news in English	Developing conversations and small talk	E-mail skills
LUNCH BREAK				
14.15 - 15.45: English Practice				
English at Work: Interviews and CVs	English for Life: Conversation and Communication	English at Work: Giving a presentation	English for Life: Vocabulary Development	English at Work: Taking part in meetings
15.45 - 16.45 (Wednesday: 13.00 - 13.45): Supervised self-study in the self-access centre (optional)				

- Homework will be set regularly throughout the programme.

25+ Courses

LESSONS/HOURS PER WEEK

30 or 35 lessons / 22½ or 26¼ hours

START DATES

Any Monday for between 1 and 6 weeks

AGES

Minimum: 25
Average: 43
Age Range: 25 - 60

CLASS SIZES

Average: 3
Maximum: 6

LEVELS

Elementary to Advanced
(A1 to C1)

Beginners are only accepted for individual tuition.

STUDENT NUMBERS 2016/17

Switzerland	17%
Germany	16%
Spain	16%
Italy	9%
Japan	7%
6%	Czech R.
4%	Hungary
3%	Russia
Other	22%

"If you want to live in a very English city - go to Chester. If you want to get good practice and improve your English with highly qualified teachers - go to English in Chester!"

Maria, Russia



THE 25+ COMBINATION COURSE

The 25+ Combination Course features both group and individual lessons to meet your specific needs in General English, Work-related English or English for Specific Purposes (ESP). Your needs are always assessed prior to the commencement of the course.

Our 25+ Combination Course is ideal for clients who have two basic requirements:

- To develop their all-round fluency in English
- To have some specific English language training to meet their personal or professional needs

The following combinations of group and individual lessons are available:

- 30 group + 5 individual lessons / 26¼ hours per full week
- 20 group + 10 individual lessons / 22½ hours per full week
- 20 group + 15 individual lessons / 26¼ hours per full week

We have worked in the corporate market for many years and have experience in delivering courses for clients from many different professional areas.

English in Chester's network of local contacts, at an academic and more practical level, can often be involved in our 25+ Combination Courses.

COURSES FOR THE INDIVIDUAL & 2:1 COURSES

Full-time one-to-one courses can start on any Monday. These courses normally include 22½ hours of tuition per full week (with a reduction when there is a public holiday during the week).

Two people from the same company at the same language level and with the same needs may benefit from a 2:1 course. These courses can start on any Monday and include 22½ hours of tuition per full week (with a reduction when there is a public holiday during the week).

OTHER SPECIAL COURSES

Our experienced teaching team have been creating specialist short courses for individuals and groups for over 30 years. Courses are tailored to meet individual and group needs. We are also happy to design a special course for a group of employees from a company. These full-time courses would typically include 22½ hours of tuition per week, often with an accompanying programme of professional visits. For a quotation please contact us outlining your requirements.



Development Courses for Teachers

A Refreshing Approach to Professional Development

LESSONS/HOURS PER WEEK

30 lessons / 22½ hours

START DATES

Set dates for one-week courses. Students may take two successive courses.

MINIMUM AGE

25

MAXIMUM CLASS SIZE

10

LEVELS

B1+

INCLUSIVE FEATURES

Tuition fees include:

e-CHESTER

e-Chester is our online guided learning programme. You can have free, full access to e-Chester from the time of booking, during your course and for 6 months after your course.

SELF-ACCESS CENTRE

A teacher is available to help you in our well-equipped centre for up to an additional 4½ hours a week.

CHESTER ORIENTATION AND WEEKLY EARLY-EVENING SOCIAL EVENT

Other optional evening and weekend events at cost.

"I liked the small groups with a focus on the individual and the very good, dynamic teachers who are encouraging, flexible and very professional."

Cornelia, Switzerland



We offer one-week Professional Development courses for teachers. The aim is to stimulate teachers through exposing them to new ideas and techniques which they can actively employ to enrich their teaching.

There are two specialist one-week courses for teachers:

Methodology Booster Course: Exposure to and practice in different methodologies, techniques and ideas for effective English language teaching.

Content and Language Integrated Learning (CLIL) Booster Course: Exploration of key principles, materials design and practical activities for teachers involved in teaching other subjects through the medium of English.



English in Chester can also tailor-make courses for groups of teachers. These can include language development as well as a methodology component. All courses always provide practical ideas for teachers to use with their students. Courses can be designed for teachers of young learners in different age groups or for teachers of adult learners. They can be for experienced teachers or for new entrants to the teaching profession. Please contact the school with your group's requirements for a quotation.



Examination Courses

English Courses with Internationally Recognised Qualifications

FEATURES ON ALL EXAMINATION COURSES

e-CHESTER

e-Chester is our online guided learning programme. You can have free, full access to e-Chester from the time of booking, during your course and for 6 months after your course.

SELF-ACCESS CENTRE

A teacher is available to help you in our well-equipped centre for up to an additional 4¼ hours a week depending on the exam chosen.

TUTORIALS

Regular meetings to discuss your progress / study plans.

MINIMUM AGE

16

Please read the section "Students under the age of 18" in the Terms & Conditions on our website.

MAXIMUM CLASS SIZE

12

It is always valuable to take an internationally recognised examination. This can help you in your work, study and career development. We offer a range of examinations at different levels to meet the needs of our students.

EXAMINATION LEVELS

English in Chester Level	Common European Framework (CEFR)	CEFR Summary for start of stage	Cambridge Examinations / Available exam dates	IELTS (exam dates monthly)
False beginner to low elementary	A1	You can understand and use very basic phrases. You can ask and answer questions about personal details such as where you live and who you know.		
Elementary to Pre-Intermediate	A2	You can understand basic sentences and frequently used expressions. You can communicate in simple situations.	KET March, May, December	
Intermediate	B1	You can make effective and independent use of the language in familiar situations although there are still lapses in communication.	PET March, May, December	4.0 - 5.0
Upper-Intermediate	B2	Your use of language is consistent and usually appropriate but lapses in fluency and accuracy still occur in complex situations.	Cambridge First (FCE) April, May, June, August, December	5.0 - 6.5
Advanced	C1	You have a good command of the language. It is fluent, accurate and well-organised with only a few uncertainties in complex and difficult situations.	Cambridge Advanced (CAE) June, August, December	6.5 - 8.0
Advanced We only offer 1:1 classes at this level	C2	You have an excellent command of the language and can tackle the most difficult tasks.	Cambridge Proficiency (CPE) Not available at English in Chester	8.0 - 9.0

GENERAL ENGLISH WITH CAMBRIDGE EXAMINATION PREPARATION (FCE, CAE)

We specialise in preparation for the Cambridge English First (FCE) and Advanced (CAE) examinations. FCE is an upper-intermediate level qualification. It proves you can use everyday written and spoken English for work or study purposes. A CAE pass shows that you are a high achiever in your use of all English language skills. English in Chester is a Cambridge Examination Centre and all tests take place at the school.

LESSONS/HOURS PER WEEK

30 lessons / 22½ hours

including:

- 20 core morning General English lessons
- 10 lessons Exam Focus group

START DATES

Set start dates for 10-week and 5-week fast track courses. Students may take part of an exam course. Fees are pro rata and there may be a late exam entry fee. Please note the written exam dates. The oral exams will take place before the course finish date.

SPECIAL REQUIREMENTS

There is a barrier test for all FCE/CAE courses. If students book an exam course and on arrival in Chester are not at the right level, they will be transferred to the most suitable course available.



Examination Courses

LESSONS/HOURS PER WEEK

28 lessons / 21 hours including:

- 20 core morning General English lessons
- 4 lessons from a choice of afternoon options
- 4 lessons Exam Focus group

LESSONS/HOURS PER WEEK

28 lessons / 21 hours including:

- 20 core morning General English lessons
- 6 lessons Exam Focus group
- 2 lessons Academic Writing

START DATES

Any Monday for a minimum of 2 weeks

LEVELS

B1 to C1

LESSONS/HOURS PER WEEK

28 lessons / 21 hours per week

START DATES

Set dates for 2-week courses

LEVELS

B1+

TEST DATES

Normally on the Saturday following the course

"If you are looking for a very well-organised course for Cambridge examinations you will be absolutely satisfied with English in Chester."

So-Young, South Korea



GENERAL ENGLISH WITH CAMBRIDGE EXAMINATION PREPARATION (KET, PET)

If you are at a A2/B1 level on General English Courses we encourage you to take KET and/or PET exams. Preparation takes place in the 4 weeks prior to the exam which is offered three times a year. There is an exam entrance fee. Contact the school for dates and fees.

GENERAL ENGLISH WITH IELTS PREPARATION

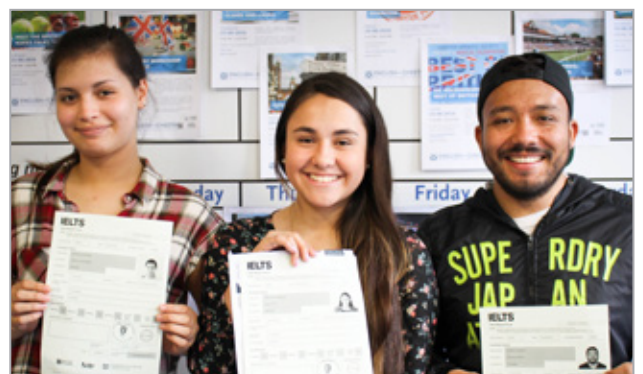
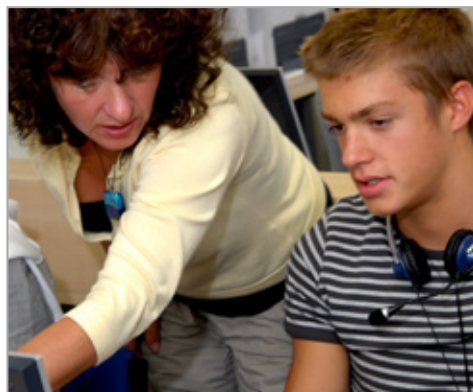
IELTS is often a requirement for university entry. Our IELTS preparation course starts any Monday and is a combination of General English, Exam Focus and Academic Writing lessons. The course will prepare you for undergraduate or postgraduate studies which are taught in English. You will learn to use English with confidence both in your academic studies and socially. Our experienced and professional teachers will develop your exam techniques so that you achieve the best possible result in each section of the exam.

The rate of progress varies depending on student level, ability and determination but on average our IELTS students' test scores increase by 0.5 in 7-8 weeks. We will provide you with regular examination practice and homework. We also offer information and advice to help you choose and apply for your university course.

Exam dates are available every month at a local test centre. There is an examination entrance fee. Please contact the school for dates and fees.

INTENSIVE IELTS BOOSTER COURSE

All lessons on these intensive 2-week courses focus on IELTS examination preparation, designed to boost your IELTS score in the shortest possible time. Students on the General English with IELTS Preparation course may transfer to the booster course for the weeks prior to their exam if required.



50+ Courses

Language Holidays for the Over Fifties

LESSONS/HOURS PER WEEK

20 lessons / 15 hours plus inclusive social programme

START DATES

Set dates for 2 and 3-week courses. Students who cannot take the full 3-week course can be accepted on the first 2 weeks of the course subject to availability. Fees are pro rata.

AGES

Minimum: 50
Average: 62

MAXIMUM CLASS SIZE

10

LEVELS

- Elementary / Pre-Intermediate (A1/A2)
- Intermediate + (B1/B2)
- Advanced (B2+/C1)

Students may be offered the opportunity to join a General English group if this is more appropriate to their level of English and/or interests.

STUDENT NUMBERS 2016/17

Switzerland	27%
Japan	16%
Germany	14%
Spain	9%
6%	Austria
4%	Sweden
4%	Brazil
Other	20%

"The teachers have been extremely kind and helpful. I would recommend this course to anyone."

Brasileira, Brazil



Chester is a perfect base for mature students. It is a heritage city with unique charm. The buildings, history, traditions and position on the River Dee make Chester a leading tourist centre attracting many international visitors.

The 50+ Course enables you to practise your English, explore our region and meet new people. It includes **Language & Skills Development (15 hours per week)** and a **Social Programme**.

The Language & Skills Development lessons enable you to:

- improve your understanding of spoken English
- improve your accuracy in the use of language
- increase your confidence in speaking English naturally
- acquire a variety of formal and informal vocabulary in a range of contexts

The social programme is planned by our experienced staff who accompany you on all the trips. Each course includes two afternoon events and one half-day excursion each week with a full-day excursion on mid-course weekends. There is an optional weekly evening event at extra cost. We:

- introduce you to the beautiful city of Chester and the surrounding area
- enable you to visit many major tourist attractions
- take you to outstandingly beautiful National Parks e.g. North Wales, The Lake District or The Peak District and to towns and famous cities like Liverpool and Manchester
- include a "Meet the British" component



SAMPLE TIMETABLE (INTERMEDIATE)

Monday	Tuesday	Wednesday	Thursday	Friday	Saturday
09.30 - 11.00: Language Development					10.00 - 18.00: Full day excursion to Liverpool
Welcome, online testing and school orientation	Conversation skills: What do we have in common?	Direct and Indirect Questions	Past and Perfect Tense Review	Comparatives and Superlatives	A vibrant city associated with the Beatles. Attractions include two cathedrals, museums and galleries, the famous waterfront and the Albert Dock.
COFFEE BREAK					
11.30 - 13.00: Skills Development					
Study Skills British Life Quiz	Family Trees	Food and Shopping	The Media in Britain	Describing a journey/ Beatles' song	
LUNCH BREAK					
14.15 - 15.45: An introductory tour of Chester See the historic walls, the famous clock, the cathedral, the town hall and the unique Rows.	14.30 - 15.45: Social Programme Overview An outline of our social programme and possibilities for independent visits in the region.	13.30 - 18.00: Port Sunlight A unique village with beautiful architecture, a fascinating history and a wonderful art gallery.	Free afternoon with optional evening activity (e.g. theatre visit £30 additional cost)	14.30 - 15.45: Meet the British Afternoon Tea Enjoy a delicious cream tea at a local tearoom and learn about the history of this English tradition.	

Summer Courses for Teenagers

An International Experience with Inclusive Social Programme

LESSONS/HOURS PER WEEK

20 lessons / 15 hours plus
inclusive social programme

START DATES

Any Monday during the summer
for between 2 and 4 weeks

AGES

Minimum: 13 *

Maximum: 16 *

** In exceptional circumstances there may be a few 12 and 17 year olds on the course when they form part of a group booking.*

Please read the section "Students under the age of 18" in the Terms & Conditions on our website.

MAXIMUM CLASS SIZE

14

LEVELS

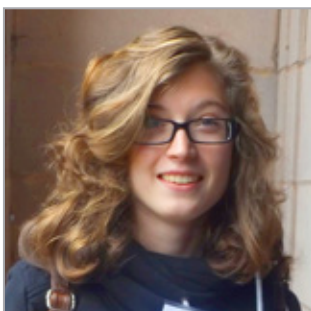
Elementary to Advanced
(A1 to C1)

SPECIAL WEEKLY FEATURES

- 2 project based afternoons
- 1 half-day excursion
- 2 half-day activities
- 2 evening events
- 1 full-day weekend excursion on all mid-course weekends (not the final Saturday)

"The city is really lovely and the school is very beautiful. My hosts were friendly, helpful and kind. I improved my English, met new people from many different countries and made new memories."

Natalia, Poland



This summer course, run on a University of Chester campus, is only for individual teenagers and "mini" groups (maximum 15 students per group). We create opportunities for students to increase their confidence in English while learning about the culture and customs of other nations.

English in Chester has been running Summer Courses for Teenagers for many years. The special features of our courses are:

- No large groups - so every student is known and treated as an individual
- A high staff to student ratio (1:10) - for extra care at all times
- A maximum of 120 students - allowing us to give a lot of attention to every student
- A good nationality mix - giving more opportunity for students to speak English
- A varied, high quality social programme
- Very good homestay accommodation with welcoming and caring families



THE PROGRAMME

Morning lessons (09.30-13.00) focus on actively improving your communication in spoken English. There is a language focus, enabling you to use language structures with confidence, and a skills focus to improve your spoken and written English using the Internet, newspapers, magazines, radio programmes, poems and songs.

The afternoon excursion/activity programme is one of the outstanding features of the course. It is an integral part of the whole language learning experience and is designed to be enjoyable and stimulating. It is also an opportunity to develop language, social and sporting skills.

Summer Courses for Teenagers

STUDENT NUMBERS 2016/17

Italy	30%
Spain	22%
10% Russia	
8% Argentina	
6% Germany	
4% Taiwan	
3% Poland	
3% Switzerland	
Other	14%



SAMPLE SOCIAL PROGRAMME

Week	Monday	Tuesday	Wednesday	Thursday	Friday	Saturday
1	14.00-16.00 ① Introductory Tour (for new arrivals only)	Sport / Art / Drama / Dance	Quiz Prep.	Sport / Art / Drama / Dance	14.00 - 18.00: Beeston Castle / Ice Cream Farm	09.00 - 18.00: North Wales, Conwy & Llandudno
	19.00-21.30	Bowling		Quiz		
2	14.00-16.00 ① / Photo Shoot	Sport / Art / Drama / Dance	Beatles Project	Sport / Art / Drama / Dance	14.00 - 18.00: Manchester United Tour	09.00 - 18.00: Liverpool
	19.00-21.30	Riverboat Disco		Alternative Fashion Show		
3	14.00-16.00 ① / Treasure Hunt	Sport / Art / Drama / Dance	International Evening Prep.	Sport / Art / Drama / Dance	14.00 - 18.00: Manley Mere	09.00 - 18.00: Alton Towers
	19.00-21.30	Scottish Ceilidh		International Evening		
4	14.00-16.00 ① / Film Chester	Sport / Art / Drama / Dance	Film Chester	Sport / Art / Drama / Dance	14.00 - 18.00: Chester Zoo	09.00 - 18.00: Manchester
	19.00-21.30	Riverboat Disco		English in Chester Oscars		
5	14.00-16.00 ① / Chester Fairy Tale	Sport / Art / Drama / Dance	Talent Night Prep.	Sport / Art / Drama / Dance	14.00 - 18.00: Ice Skating	09.00 - 18.00: North Wales, Conwy & Llandudno
	19.00-21.30	Bowling		Talent Night		
6	14.00-16.00 ① / Beatles Project	Sport / Art / Drama / Dance	Quiz Prep.	Sport / Art / Drama / Dance	14.00 - 18.00: Manchester United Tour	09.00 - 18.00: Liverpool
	19.00-21.30	Riverboat Fancy Dress Disco		Quiz		
7	14.00-16.00 International Evening Prep.	Sport / Art / Drama / Dance	Chester Treasure Hunt	Sport / Art / Drama / Dance	14.00 - 18.00: Blue Planet Aquarium	
	19.00-21.30	International Evening		Laser Quest		

Saturday excursions are only for students staying the following week



Our Summer Course for Teenagers Team

"It has been great to watch my students' English improve. The school took care of every aspect of our stay, which made it very easy and enjoyable."

June, Group Leader, Italy



Courses for Groups

Short Tailor-made Courses for all Age Groups

English in Chester has a wealth of experience in tailor-making programmes for groups. In recent years groups have come from Switzerland, Spain, Italy, Austria, Mexico, Japan, Poland, Argentina, France, Hong Kong and the Czech Republic.

Courses can be run at any time of year. Course dates, course intensity, programme details with inclusive excursions and activities, class size and accommodation requirements are all negotiable. We organise courses for all age groups from the age of 13. Students can study in closed groups. Students over the age of 16 may join a General English course for all or part of their programme. **Please ask for our Courses for Groups brochure.**

Student Services



At English in Chester we provide an excellent accommodation/welfare service and look after you from the time of arrival in this country. We also provide many opportunities for an exciting, interesting and active social life.



HOMESTAY ACCOMMODATION

Over 90% of our students have homestay accommodation, which we recommend. It is the best way to meet people, practise your English and discover more about our culture. There are some very special points about living in our region:

- The people are famous for their hospitality and have time to talk to you
- The standard of our homestay accommodation is excellent. We are the only year-round British Council accredited school in Chester and set high standards for our hosts
- The cost of living is a little lower than in the south of England



“We have been hosting students for 20 years and the experience has been invaluable for our family. We hope they arrive as guests and leave as friends.”

Ian & Jane, one of our homestays



We offer homestays with shared or private bathrooms. The majority of our homestays provide shared bathrooms, but a few have private bathrooms. We are very proud of our successful record in accommodating students and of the very positive feedback we get from our students.

Our homestays provide half board with breakfast and dinner. They will also provide accommodation on a bed and breakfast basis. We really recommend half board for more interaction with the family and more opportunity to practise your English and learn about British culture and customs. It is also a cost-effective option.

Please note:

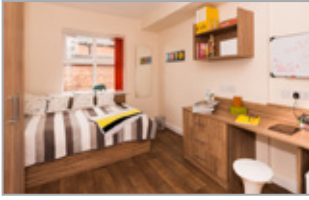
- Our adult students normally request single rooms. Shared rooms are only available for students at the school who request to stay together. Students on the Summer Course for Teenagers will be allocated either a shared or a single room.
- Students arrive at their homestay on the Sunday before their course commences and leave on the Saturday at the end of their course.

“My hosts were a really lovely and friendly family. I was part of the family and will stay in contact with them. I improved my language skills and experienced English culture.”

Patrik, Switzerland



Student Services



SELF-CATERING ACCOMMODATION: WATERSIDE COURT

Waterside Court is a modern, purpose-built residence. It is perfectly located on the banks of the canal just outside the old city walls. It is just a short walk (6 minutes) from English in Chester and the city centre.

Waterside Court has individually styled en-suite rooms in “clusters” with shared living and dining areas. There are mini fridges and safes in all rooms. The fully fitted kitchens have dishwashers, microwaves and all the usual appliances. Washing machines are centrally located within the building. There is high speed broadband WiFi in all bedrooms and common areas. There is a sophisticated access control system ensuring security at all times.

Waterside Court is a University of Chester residence and is available year-round for students aged 18 and over staying for a minimum of 2 weeks. Students arrive on a Sunday and depart on a Saturday. A refundable deposit is payable per room.

If Waterside Court is full other residential self-catering options may be available in central Chester. Please contact the school for more details.



HOTEL / GUEST HOUSE ACCOMMODATION

We recommend several hotels, guest houses and aparthotels in Chester. Our partner hotels are:

- **Express by Holiday Inn (Chester Racecourse)** - a modern hotel very conveniently located near the school
- **Macdonald New Blossoms Hotel** - a comfortable, traditional 4-star hotel in the city centre

AIRPORT TRANSFERS

English in Chester arranges transfers from our local airports (Manchester or Liverpool). The journey time is approximately 40 minutes.

Meet & Greet Service for young people

We offer a Meet & Greet Service for all unaccompanied students under 16 who are not being met by family or friends. Students are met and transferred from Manchester or Liverpool Airport to the homestay and back to the airport at the end of the course. A named driver will escort the student at all times to the departure gate or until the airline takes over the responsibility.

Please note the regulations of some low-cost airlines may prevent certain age groups from travelling on their own. It is the responsibility of parents to check this when booking flights.

Students under 18 should also carry with them a parental letter of consent (proforma available from the school) and a copy of their offer letter for the course, as they may be required to show these on entry to the UK.

“I really liked the location of Waterside Court. It is so close to the city centre and the school. It overlooks a beautiful canal and is so peaceful and quiet. The room was comfortable and I like having an en-suite bathroom. I also liked the independence the residence offered.”

Agnieszka, Poland



Student Services



“While I was in Chester I visited a lot of places like Manchester, Liverpool and London and I made friends with people from all over the world. This was the best experience of my life, I absolutely loved it!”

Priscilla, Costa Rica



“It was nice. I played football every week and the Lake District was easily the most beautiful place I have ever visited. I don’t think I will ever forget these experiences.”

Hiroki, Japan

“The social programme was very well organised. All the excursions were amazing!”

Silvan, Switzerland



SOCIAL PROGRAMME

Our social programme is a very important and much appreciated part of school life. Language and culture are inextricably linked so our programme of activities and excursions is designed to activate your English while you learn about British life and culture. You can visit many interesting places, share new experiences with students from all over the world, get to know your teachers outside of the classroom and have lots of fun.

On some courses (Summer Courses for Teenagers and 50+ Courses) there is an inclusive social programme devised with the interests of these age groups in mind. For our other students we offer an optional, full and varied social programme. Each event is separately priced and students book and pay for the events that they are interested in. We always offer a range of events so that there is something of interest for everyone.

English Plus and evening events

At least twice during each week, we offer free, or inexpensive, social events after school such as sports, international food evenings and visits to some of our traditional pubs. At school we offer English Plus events to provide you with more opportunities for informal, natural English practice. Weekly events often include: Conversation Club, Book Club, Film Club and a city walk. Monthly events often include: a coffee morning, a CV workshop and English Corner (informative and entertaining sessions introducing our favourite elements of local life and culture).

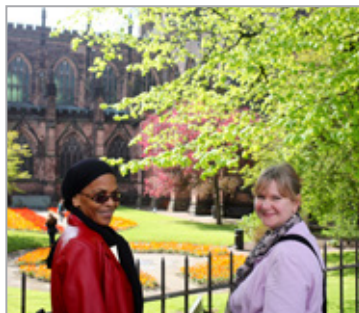
Excursions

Full day excursions at the weekend to destinations such as The Lake District and North Wales are offered once per week year-round and twice per week in July and August. There are many opportunities to visit Liverpool and Manchester which are easily accessible. Other events such as football matches or theatre trips are also popular.

Your own social activities and Meet the British

Our Social Programme Organiser has lots of information and advice on places to visit and can help you to arrange your own social activities. Our range of information packs provide comprehensive instructions on where to go, how to get there and what to see and do.

Our Meet the British programme is designed to help you get involved with the local community, meet British people and practise your English with native speakers.



Student Services



"I will never forget this special experience and I'm looking forward to studying here again. For the moment, I would like to say: thank you English in Chester!"

Vanessa, Italy



"We have enjoyed ourselves and learned so much. Thank you for treating us like VIPs!"

Camilla, Sweden



Sample Monthly Social Programme (Summer)

Week	Monday	Tuesday	Wednesday	Thursday	Friday	Saturday	Sunday
1	Job Skills Workshop 15.45-16.30 Free	5-a-side football 16.00-17.00 £3	British Dessert Cookery Lesson 14.30-15.30 £2	English Corner: Who was Henry VIII? 15.45-16.30 Free	International Food Evening 16.30-19.30 Free	Liverpool: Sight-seeing tour 10.00-16.30 £15.00	North Wales: Castle, seaside and mountains 10.00-17.00 £35
			Pub Evening 19.30 Free + drinks Over 18s only	Tennis 16.00-17.00 £5			
2	EiC Conversation Club 15.45-16.30 Free	5-a-side football 16.00-17.00 £3	Book Club 14.30-15.30 Free	Tennis 16.00-17.00 £5	Tea Party in the Garden 16.30-18.30 £5	The Lake District: Scenic walk and river cruise 08.30-18.30 £35	York: Sight-seeing tour 09.30-18.30 £35
			A Musical at the Theatre 18.00-23.30 £27.50	Open Air Cinema 20.45-22.45 £10			
3	Job Skills Workshop 15.45-16.30 Free	5-a-side football 16.00-17.00 £3	Debate Club 14.30-15.30 Free	English Corner: Meet a British Artist 15.45-16.30 Free	School Breakfast 08.45-09.25 Free	Shrewsbury: Sightseeing tour 09.00-18.00 £25	North Wales: Castle, seaside and mountains 10.00-17.00 £35
			Pub Evening 19.30 Free + drinks Over 18s only	Tennis 16.00-17.00 £5	Chester Races From 16.00 From £10		
4	EiC Conversation Club 15.45-16.30 Free	5-a-side football 16.00-17.00 £3	Film Club 14.15-15.45 Free	Tennis 16.00-17.00 £5	School Barbeque 16.30-19.30 £6	The Lake District: Scenic walk and river cruise 08.30-18.30 £35	Chester Races From 11.30 From £10
			Irish Music at the pub 19.00 Free + drinks Over 18s only	Shakespeare in the Park 19.30-22.30 £20			



INSURANCE

It is a requirement that all students are covered by an insurance policy throughout their stay at English in Chester. This insurance should cover cancellation and curtailment, course fees, medical expenses, personal belongings cover, money, personal liability and personal injury. We can offer such insurance at a reasonable weekly cost through our Studentguard+ policy. The school will not be responsible for resolving any issues that arise from lack of insurance cover on the part of the student.

ENGLISH IN BARBADOS

Learn  English in Barbados
at Codrington Language Centre

English in Chester works with The Codrington Language Centre which offers courses throughout the year in Barbados. E-mail contactus@codringtonlanguagecentre.com for further details.

Living in Chester



There are many different but equally important components to a stay at English in Chester. We pay special attention to your accommodation and welfare and introduce students to Chester and the surrounding area through our exciting social programme.

ACCOMMODATION

- Homestays (shared or private bathrooms)
- Waterside Court, our self-catering student residence
- Hotels and guest houses
- Aparthotels

"I've been accommodating students for years and love every minute of it!"

Doris, one of our homestays



YOUR ACCOMMODATION

This is a really important part of a stay in another country. We want all of our students to feel welcome and to be happy with their accommodation. Our students have different requirements and we try to take these needs into account when arranging accommodation for students.

Many students feel that being part of a family is a valuable part of living in another country. They can practise their English and have some first-hand experience of the British way of life. We have over 200 homestays in regular use and some families have been hosting our students for many years. Our hosts are very different but they all offer our students a very warm and genuine welcome.

Some of our students want a little more independence and choose to stay at Waterside Court. This very comfortable residence is conveniently located near the school and city centre. All rooms are en-suite.

Our partner hotels are very happy to accommodate some of our older clients and executive students who prefer total independence.

YOUR FREE TIME

Your free time is an opportunity to consolidate your English and find out more about Chester and the surrounding area. The optional excursion programme gives you a chance to do this.

Chester is also the perfect centre for the independent traveller:

- There is an excellent local rail network
- There are cheap flights from local airports for students who want to explore Europe
- There are many possibilities for exciting weekends away or days out

EXCURSIONS

Our optional excursion programme includes:

- Full-day excursions every weekend
- Events on mid-week afternoons/evenings including social nights out
- A wide range of activities from football matches to international food evenings, ice skating to opera, sightseeing to film nights

We regularly feature trips to:

- Liverpool & Manchester
- York
- North Wales and the Snowdonia National Park
- The Lake District



Our City – Chester



Students meet the Town Crier

The heritage city of Chester is a wonderful location for an English language course for students of all ages. It is also an excellent base for exploring the vibrant cities and beautiful countryside nearby.

FACTFILE

- Population: 120,000
- 8.25 million visitors a year
- 2000 years of history
- Britain's only completely walled city
- Major tourist attractions:
 - The unique "Rows"
 - River Dee
 - Chester Zoo - Britain's biggest and best
 - Chester Cathedral
- A shopper's paradise
- Great nightlife and leisure facilities

Most of our students come to us because someone they know has recommended English in Chester and the city of Chester to them. Some students choose Chester for very special reasons: it is near a branch of the multinational company they work for, they have friends in the area, their favourite football team is nearby. Some students know very little about Chester when they arrive. All our students have been delighted with the city and with the welcome they receive here.

Chester is a very nice city to live in. It is the perfect size; big enough to offer a really good range of services but not too big to be impersonal. It is a university city that welcomes millions of tourists. There is an excellent tourist infrastructure with a lot to see and do when school is over and at the weekends. It is a busy and prosperous city which our students really like.



"I would recommend everybody to choose English in Chester because it is really great! Great city, great people, great school - in one word, marvellous!"

Stephanie, France

There is always something to experience in Chester at any time of the year. Chester is truly a city for all seasons. Just a few minutes' walk from the school you will find fashionable cafes and boutique shops in historic mediaeval buildings. From the ancient walls you can see our old horse racing track, dating from 1539, and our modern sports centre. This is a city where the most complete Roman amphitheatre in Britain is opposite one of the coolest night clubs in the region. Teenagers, our adult students, professional people and our senior students all find it a welcoming and attractive place in which to study - you'll love it too!





"The English in Chester team is excellent. Our teachers are very professional and encouraging. I definitely made the best choice! Chester is a really beautiful city and worth seeing!"

Arne, Germany



We are a member of The English Network, a group of established, experienced, independent English language schools that have a reputation in the market for quality and personal service.
www.theenglishnetwork.com



ENGLISH IN CHESTER

9-11 Stanley Place
Chester
CH1 2LU

Tel: +44 (0)1244 318913
Fax: +44 (0)1244 320091
E-mail: study@english-in-chester.co.uk

Director: Richard Day
Principal: Nigel Paramor

YOUR JOURNEY TO CHESTER

English in Chester looks after you from the moment you arrive in England. We offer a friendly taxi transfer service to your homestay from our local airports (Manchester and Liverpool). It takes approximately 40 minutes.

We are really easy to get to. Most European students will be able to fly direct to Manchester or Liverpool. Other students can fly via airports like Paris, Frankfurt, Madrid or Amsterdam. This is much more convenient than flying via London.

Trains to Chester from London leave from Euston station every hour. The journey takes 2 hours.



English in Chester & Social Responsibility

The Environment

We care about our impact on the environment and aspire to be a "green" school.

The Community

We believe that we should play an active part in the local community.

Fairtrade

We buy products that offer a fair deal to all those in the supply chain.

Voluntary Service Overseas

We help those in the developing world through Voluntary Service Overseas, our nominated charity.