



# Emerald Cultural Institute

Experience Tradition.  
Embrace Innovation.



# Emerald Cultural Institute

## Guide to Adult & Junior Programmes

### Face-to-face & Virtual Ireland and UK

2022



# Contents

<b>PALMERSTON PARK</b>	<b>3</b>
<b>ADULT PROGRAMMES</b>	<b>5</b>
General English & Examination	
Preparation Courses programmes	6
Academic programmes	9
Virtual programmes	12
Executive/Individual Lessons	13
Teacher Training	14
<b>JUNIOR PROGRAMMES</b>	<b>15</b>
Virtual STEM Programmes	16
Mini-Stay (Virtual & In-person)	17
Junior Summer Programmes	18
<b>JUNIOR CENTRES</b>	<b>21</b>

## Palmerston Park

Our Palmerston Park School is set in its own landscaped gardens overlooking the beautiful Palmerston Park. It offers students the chance to study English in a peaceful and stress-free environment with the city centre only a six-minute tram journey away. The original school building is a gracious Victorian mansion and we have enriched the campus by adding a specially designed modern building with additional classrooms and a large serviced canteen.

Covid-19 guidelines and measure have been put in place in our Palmerston Park school for the safety of students and staff.

### Facilities and features Include:

---

Twenty-two modern classrooms

---

Interactive technology

---

WiFi access throughout the campus

---

Private landscaped garden with covered seating areas

---

Located in a prime residential neighbourhood within easy reach of Dublin city centre

---

Large serviced restaurant and coffee bar

---











# Adult Programmes





# General English & Examination Preparation Courses

## Intensive Course

The Intensive Course covers the four basic skills of listening, speaking, reading and writing and is designed to improve communication in spoken and written English. The teachers provide learner-focused lessons which help build students' confidence, accuracy and fluency.

### At a glance

**Tuition:** 20 X 60 minutes of group tuition per week

**Times:** 09.00-11.00 and 11.30-13.30 Monday to Friday

**Class size:** Maximum 14, Average 9

**Minimum duration:** 2 weeks

**Age:** 17+

**Starts:** Every Monday

**Levels:** \*Beginner to Advanced (\*Fixed Dates for Beginners)

**Available face-to-face and online**

## Intensive Plus Speaking Skills

This course is designed to improve students' fluency in English. It allows students to develop their language skills in the morning lessons and put these skills into practice in the afternoon group conversation classes. The smaller conversation classes help to facilitate meaningful discussion within the group. Teachers concentrate on vocabulary building and idiomatic language, leading to more natural English speech.

### At a glance

**Tuition:** 26 X 60 minutes of group tuition per week

**Times:** 09.00-11.00 and 11.30-13.30 Monday to Friday  
14.15-16.15 Tuesday, Wednesday, Thursday

**Morning Class size:** Maximum 14, Average 9

**Afternoon Class size:** Maximum 9

**Minimum duration:** 2 weeks

**Age:** 17+

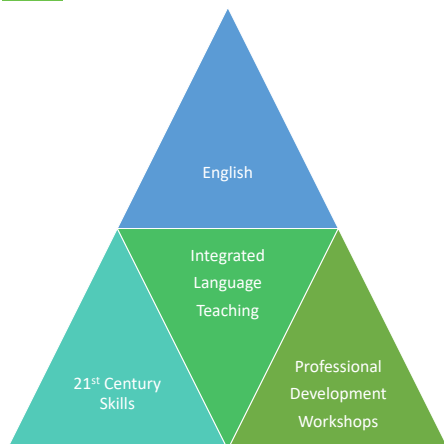
**Starts:** Every Monday

**Levels:** Pre –Intermediate (A2), Intermediate (B1), Upper Intermediate (B2)

**Available face-to-face and online**

## Integrated Language Learning

Learn English and increase your employability with our 'Integrated Learning' curriculum based on 21st Century Skills such as collaboration, critical thinking and problem solving. Using these essential skills as a foundation, Emerald's expert in-house academic team have developed a series of Integrated Learning Workshops. Students will be challenged with developing their soft skills while continuing to improve their competency in English. Learn more about our modern approach to Integrated Language Learning [here](#).







## Cambridge Examination Courses

Our Cambridge Examination Courses are taught by expert teachers who have a proven success record in preparing students for the First Certificate, Advanced and Proficiency Examinations. These courses concentrate on developing key examination techniques across all the language skills.

### At a glance

**Tuition:** 20 X 60 minutes of group tuition per week

**Times:** 09.00-11.00 and 11.30-13.30 Monday to Friday

Simulated Speaking and Listening Test practice outside of scheduled class time

**Class size:** Maximum 14, Average 9

**Course Duration:** 6-12 weeks – see below

**Age:** 17+

**Starts:** Fixed Dates

**Required Levels:** FCE – CEFR B2/CAE – CEFR C1

**Available face-to-face and online**

## Recognised Cambridge Examination Venue



**CAMBRIDGE ENGLISH**  
Language Assessment  
Part of the University of Cambridge

## Cambridge Examination Course Dates:

### *First Certificate in English Course (FCE)*

January 4th to March 4th (9 weeks)

March 14th to June 3rd (12 weeks)

July 4th to August 26th (8 weeks)

September 19th to December 9th (12 weeks)

### *Cambridge in Advanced English Course (CAE)*

January 4th to March 11th (10 weeks)

March 14th to June 3rd (12 weeks)

September 12th to December 2nd (12 weeks)

## Recognised Oxford Test of English Approved Centre

The Oxford Test of English is the only language proficiency test certified by the University of Oxford. An affordable, personalized test that can fit the needs of everyone.

It is 100% online and it consists in 4 modules: Speaking, Listening, Reading and Writing. They can be taken together, on their own, or in any combination. The test is aligned to the Common European Framework of Reference (CEFR) across 3 levels: A2, B1 or B2.

The test is available all year around.







## IELTS Examination Courses

IELTS is the International English Language Testing System which tests English proficiency across the globe. The IELTS Examination Course focuses on developing key techniques and strategies for the IELTS Examination. Participants complete regular practice tests and are taught how to approach all the sections of the test effectively. Our Academic Team are available to assist with the application process for the IELTS Examination.

### At a glance

**Tuition:** 20 X 60 minutes of group tuition per week

**Times:** 09.00-11.00 and 11.30-13.30 Monday to Friday

Simulated Speaking and Listening Test practice outside of scheduled class time

**Class size:** Maximum 14, Average 9

**Minimum duration:** 2 weeks

**Age:** 17+

**Starts:** Courses run on an ongoing basis

**Available face-to-face and online**

**Levels:** \*IELTS Target Score 5-5.5, IELTS Target 6.0 – 6.5, IELTS Target 7.0+

\*Entrance to any IELTS class is subject to an assessment test and a minimum entry level is required for each course.

### Included in all general English and examination preparation courses

- Online placement test in advance of arrival
- Tuition (60 minutes per lesson)
- Interesting and stimulating supplementary course materials
- Exclusive Emerald-designed Integrated Language Learning
- Seminars such as “Living and Working in Ireland” and “CV Preparation and Interviews”
- Rich and varied Social Programme
- Diploma on completion of course with personalised student report
- Exclusive access to Emerald student website with information, interactive presentations and free learning resources

“ Just to let you know that Chloé got an IELTS 7 score, as she needed. We are very happy and we thank you very much for all your kindness and the excellent teaching too. ”

Sylvie, Parent – France



# Academic Year Programmes

Our Academic Year Programmes can be structured to suit each individual's requirements and a suitable study path is designed for the student based on the starting level, academic needs and learning objectives.

Flexibility is a key part of the programme, allowing students to combine different modules and courses within their Academic Year Programme. All our Academic Year students are monitored regularly throughout their programme by their academic mentor, their class teachers and the Director of Studies.

## At a glance

**Tuition:** Choice of 15, 20 or 26 hour programmes

**Duration:** From 25 to 35 weeks

**Age:** 18+

**Starts:** Every Monday, morning or afternoon classes

### Levels:

AYP1: \*Beginner to Advanced (\*Fixed dates for beginners), 20 morning hours

AYP2: Pre-Intermediate to Advanced, 26 morning and afternoon hours

AYP3: Elementary to Advanced, combination of 20 and 26 morning and afternoon hours

AYP15: Pre-Intermediate to Advanced, 15 afternoon hours

Students of an appropriate language level may incorporate any of our afternoon options into their study programme.

\*Academic Year Programmes may be subject to change as a result of updates to the current Immigration Guidelines and Procedures.

\*Immigration regulations require all non-EU students to undertake a recognised examination at the end of an Academic Year Programme. Recognised Examinations accepted by Immigration include IELTS, Cambridge Examinations and the Test of Interactive English (TIE).

## Unique Emerald Services

Academic mentoring system which provides students with advice and support to help in areas such as study planning, examination registration and preparation, career and further study opportunities

Career Guidance and Seminars such as "Living & Working in Ireland" and "C.V. preparation & interview techniques"

Free workshops

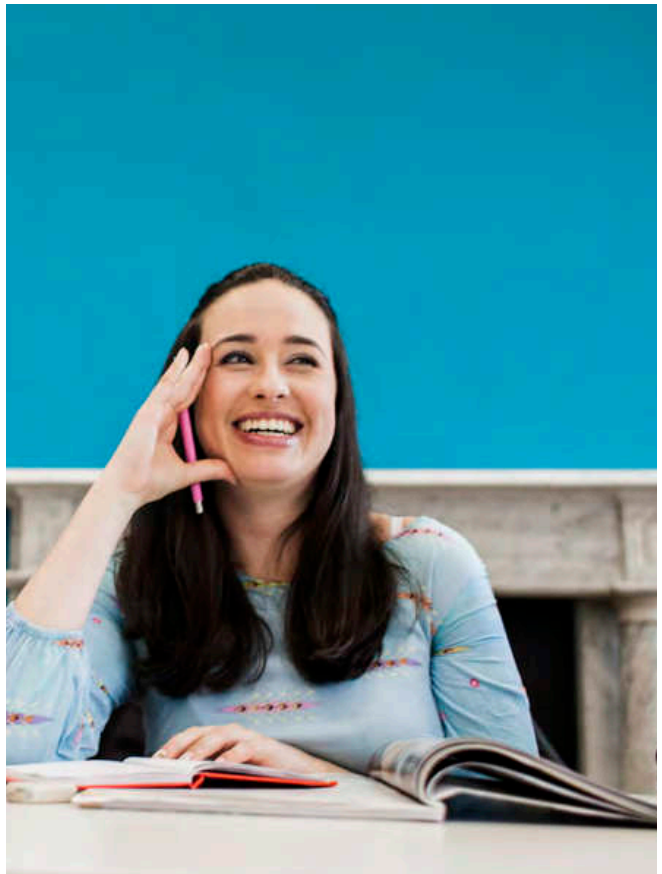
Free TIE preparation advice and support

Access to our online services

Flexibility to combine different modules and courses within the programme (morning options)

Integrated Language Learning

Access to our Emerald Learn Platform









## Pre-Sessional Foundation Programme

For students with a High School Diploma who want to go to an English speaking university or Higher Education Institute but need additional help to develop their English. Our programme offer a proven pathway to the Foundation Programmes in our Partner universities, including Trinity College Dublin and NCUK partner universities in Ireland and the UK. It is designed to get you to a minimum score of IELTS 5.0 or equivalent.

### At a glance

**Tuition:** 20x60 minutes of group tuition per week;  
**OR** 20x60 minutes of group tuition per week + 6X60 minute of small group electives.

#### Times:

Morning classes

Class 1: 09.00 - 11.00 Break: 11.00 - 11.30 Class 2 :  
11.30 - 13.30

Afternoon Electives

(26-hr programme) Tuesday – Thursday 14.15– 16.15

**Duration:** 3, 6 or 9 months

**Class size:** Maximum 14, Average 9

**Age:** 17+

**Starts:** Every Monday

**Levels:** A2 or minimum IELTS 3.5 (or equivalent)\*

\*The length of your Pre-Sessional English course will be determined by:

- Your current level of English (the lower your level, the more time you need)
- The entry level you require for your chosen programme

To decide how long you need to study with us (3, 6 or 9 months) you will take our pre-course written and oral assessment test with our Academic team.

## Gap Year Academic Programme

Combine a semester studying at Emerald Cultural Institute with a semester at Maynooth University. University modules are from 34 academic departments over 3 faculties, including modules in Law, Business, History, Media, Engineering and Science. Receive ECTS Credits for your semester abroad. Students attending the Fall semester can also choose to attain a Certificate in International Business. During the first semester at Emerald Cultural Institute students will improve their English for academic purposes and will acquire the English skills needed to successfully follow their Study Abroad Programme.

### At a glance

#### Tuition:

Gap Year Programme 1: 12 weeks English for Academic Purposes (20 hours General English + 6 hours of EAP per week) + Semester at Maynooth University

Gap Year Programme 2: 25 weeks Academic Year Programme (20 hours General English + 6 hours of Electives per week – IELTS/ EAP/ Business/ Communication) + Semester at Maynooth University

**Class size:** Maximum 14 for the English Course

**Age:** 18+

**Levels:** \*Gap Year Programme 1

Level required: IELTS 6.0 (or equivalent)

Gap Year Programme 2

Level required: IELTS 5.5 (or equivalent)

\*Application requirements for Maynooth University:

- GPA 2.6 (if below must supply two references)

- Transcript

- Passport

For more information about Maynooth University visit the **website**.

### Gap Year Academic Programme Start Dates 2022:

Gap Year Programme 1 - Start Dates 2022:

Emerald: June 20th 2022 / Maynooth: September 12th 2022

Emerald: October 17th 2022 / Maynooth: January 23rd 2023

Gap Year Programme 2 - Start Dates 2022:

Emerald: January 10th 2022 Maynooth: September 12th 2022

Emerald: May 23rd 2022 Maynooth: January 23rd 2023

\*All dates above are subject to change, with as much advance notice as possible given.







## Virtual Programmes

Through use of the Hybrid Model, students can join a variety of our programmes in virtual format:

- Intensive
- Intensive Plus Speaking Skills
- Examination Preparation
- Tailored one-to-one and small group executive course

Course Type - 20 hours per week	Timetable	4 hours per day from Mon to Fri
<ul style="list-style-type: none"> <li>• Intensive Course</li> <li><u>OR</u></li> <li>• Exam Preparation -FCE or IELTS</li> </ul>	09:00 - 11:00 (GMT)	Class contact with teacher
	11:00 - 11:30 (GMT)	Break
	11:30 - 13:30 (GMT)	Class contact with teacher
Course Type - 10 hours per week	Timetable	2 hours per day from Mon to Fri
<ul style="list-style-type: none"> <li>• Intensive Course</li> <li><u>OR</u></li> <li>• Exam Preparation -FCE or IELTS</li> </ul>	9:00 - 11:00 (GMT) <u>OR</u> 11.30 - 13.30 (GMT)	Class contact with teacher
Course Type - 6 hours per week	Timetable	2 hours per day Tues, Wed & Thurs
Listening & Speaking Skills	14:15 - 16:15 (GMT)	Class contact with teacher

### At a glance

**Location:** Learn English from the comfort of your own home

**Duration:** Minimum 1 week

**Age:** 16+

**Class Size:** Maximum 14

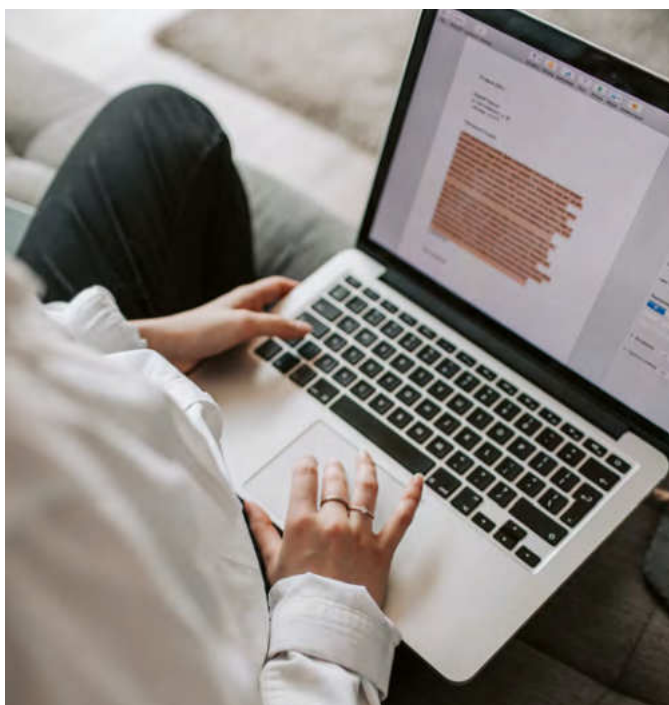
**Timetable:** a variety of timetables available to suit different time zones

**Levels:** From elementary to advanced

## Emerald Learn

Free access to Emerald Learn, our dedicated e-learning platform:

- Engage in forum discussions
- Post social updates
- Work on your daily lessons



### Features of our online lessons include:

Learn English and 21st Century professional skills, to improve both confidence and competence and achieve goals.

Access to our unique, dedicated Emerald Learn Platform

Access to e-books, audio, reading exercises, video, grammar and vocabulary as presented by the teacher

Teachers make use of features such as whiteboard and pair-work, break-out rooms and group-work settings allowing students to interact with each other

Teachers regularly assign and correct written work for all students



## Executive/Individual Lessons

Our Executive/Individual Lessons have been designed for executive clients with unique learning needs. The programmes focus on maximising progress and achieving desired learning objectives in a short time frame.

### Personal Intensive Course

This course is designed for the professional who wishes to concentrate on particular language skills or work on specific areas of English. The course is tailor-made to suit the exact requirements of the client and all participants complete a Needs' Analysis prior to their arrival.

#### At a glance

**Tuition:** 20, 25 or 30 X 60 minutes of individual tuition per week

**Times:** From 4 to a maximum of 6 hours per day Monday to Friday

**Minimum duration:** 1 week

**Age:** 21+

**Starts:** Every Monday

#### Available face-to-face and online:

Small group, executive courses are also available either in face-to-face or virtual format. The content and timetable are designed to meet clients' needs.







## Teacher Training

A variety of practical course have been specifically designed for non-native teachers of English at primary and secondary level:

- The Fun Lesson Creation Course: Primary-level
- The Energizer Master Course: Secondary-level
- CLIL Course: Secondary and late primary

### At a glance

**Tuition:** 25 X 60 minutes per week including lessons, seminars and cultural activities (in-person);  
20 X 60 minutes per week (online)

**Times:** 09.00–11:00 and 11.20–13.10 Monday to Friday  
Afternoon seminars and cultural programme provided on designated afternoons and evenings

**Class size:** Maximum 15

**Minimum number:** A minimum number of participants is required

**Minimum duration:** One week

**Starts:** On Fixed Dates and on request for Closed Groups outside these dates

**Available face-to-face and online**

*Tailor-made programmes for closed groups are also available. Courses are available in a fully face-to-face, blended or virtual format.*



## Erasmus + Funding

Qualifying participants can be funded by the Erasmus Plus programme.

### How to Apply

We recommend that you contact your National Agency to see what your funding options are. You can also use EU resources on E+ funding.

**Our PIC number is:** 946742214

**Organisation ID:** E10127281



# Junior Programmes







# Virtual STEM Programmes



## Trinity Walton Virtual Integrated STEM Club Programme

Join a creative and collaborative community of like-minded individuals, with the Trinity Walton Club's term-time STEM programme, together with local and Irish students, in collaboration with Emerald!



### At a glance:

**Ages:** 13-16 years

**Dates:** 14th January - 11th March 2022, 25th March - 27th May 2022

**Live educator STEM sessions:** Friday 5.00-6.30 pm (GMT)

One hour per week of at home experiments and demonstrations

**Levels:** Minimum level of CEFR C1 required

### Programme Includes:

- 9 weeks Trinity Walton STEM Club, including 1,5 hours per week live sessions and 1 hour per week content
- Emerald academic language level assessment
- Registration fees
- Trinity Walton diploma at the end of the course

## Trinity Walton STEM @ Uni Programme

Access college lectures, attend live webinars, prepare and submit assignments, receive feedback with the Trinity Walton Club's term-time STEM @ Uni programme, together with local and Irish students, in collaboration with Emerald!



### At a glance:

**Ages:** 15-17 years

**Dates:** Choose one or more of the 6-week module options:  
11th January - 20th February, 1st March - 10th April, 26th April - 5th June

**Levels:** A minimum level of C1+ is required

### Programme Includes:

- 6 weeks Trinity Walton STEM @ Uni
- Emerald academic language level assessment
- Registration fees
- Trinity Walton certificate of completion at the end of the course





## Mini-Stay Closed Group Programmes (Virtual and In-person options)

Emerald Cultural Institute is delighted to offer a tailor-made programme for closed groups. This programme allows us to liaise with teachers in order to build a customised and focused programme catering for the specific needs of their group.

Our **Virtual Junior programmes** have proven very popular and students have benefitted greatly from expert teaching and exposure to different aspects of the language.

The **In-person Mini-Stay programmes** encourage students to develop their language skills in a natural, everyday context. We offer two types of programme: our Standard Mini-Stay Programmes and our more specialised Mini-Stay Plus Programmes.



### At a glance

**Location:** Online or Dublin

**Age:**

13+ (Virtual option)

11-17 (In-person option)

**Duration:** Flexible, minimum 1 week

**Class Size:** Maximum 15

**Tuition:**

10 or 15 hours of group tuition (Virtual option)

15, 20 or 25 hours of group tuition (In-person option)

**Levels:**

From Elementary to Advanced (Virtual option)

From Beginner to Advanced (In-person option)



*For a quotation tailored to your requests, contact us at [emerald@eci.ie](mailto:emerald@eci.ie)*

### Topics can include:

- General English - Reading & Writing, Listening & Speaking, Vocabulary building, Role-play
- Examination Preparation – FCE, IELTS or TIE
- Leadership and 21st Century Skills – Problem solving, critical thinking, creativity, health and wellbeing, news and media, presentation skills
- English for the Workplace – Self-assessment and career skills, CV preparation, making a presentation and giving feedback, seminars and interview preparation
- Business English
- Irish Life & Culture - Literature, Culture project, History, virtual tours
- Sustainability & Tourism
- STEM with Trinity Walton Club\* (\*supplement applies)



# Junior Summer Programmes



## Multi-Activity Programme

Ireland, UK

Age 11 - 17

Minimum 2 weeks

15 hours of group tuition per week

Wide range of activities in the afternoons and evenings

One full-day excursion each week

Specially-designed material on History & Culture

Homestay and residential accommodation options available



## Intensive Course

Ireland, UK

Age 14 - 17

Minimum 2 weeks

21 hours of group tuition per week – 15 hours of general English and 6 hours of specialised lessons

Students can choose between different specialised options – Conversation & Speaking Skills, Leadership & Innovation

Cultural visits 2 afternoons per week

One full-day excursion each week

Minimum levels required, options start on fixed dates, minimum number of participants required



## Trinity Walton STEM Programme

Ireland

Age 13 - 14 and 15 - 17

10 hours of general English group tuition per week

10 hours of physics, maths, engineering and technology sessions per week

STEM related workshops and activities 2 afternoons per week

Minimum level of upper intermediate required

Wide range of activities in the afternoons and evenings

One full-day excursion each weekend

Residential and homestay accommodation



## Young Adult Programme – Discover Dublin

Ireland

Age 16 - 20

20 hours of group tuition per week

Social & cultural programme with orientation, two cultural visits per week and evening activities

Emerald tutor

Free time to explore Ireland

One full-day excursion each weekend

Lesson content includes Leadership, English for the Workplace, developing writing skills and Irish life & culture, workshops and seminars

This Programme is suitable for "Alternanza Scuola Lavoro"

## Junior Summer Programmes, English + Options:

Juventus Academy



Leinster Rugby



Horse-Riding



Music



Age 11 - 17

15 hours of group tuition per week

10 hours of professional training per week in the chosen sport or of ensemble music training and orchestral instruction

Daily private transfer from school to the training grounds

One full-day excursion each weekend

Evening Activities











# Junior Centres





## Marino Institute of Education

Dublin, Ireland

---

Single en-suite residential accommodation

---

On-campus restaurant

---

22 acres of gardens and sports grounds, with extensive playing fields

---

24-hour supervision by our residential managers and supervisors

---

Spacious indoor gymnasium

---

Student common rooms for recreation and activities

---

15 minutes from Dublin city centre by bus

---

Secure key-card access to apartments

---

Laundry facilities

---

WiFi access throughout the campus

---



## Trinity Hall

Dublin, Ireland

---

Accommodation in single and twin en-suite rooms in Trinity Hall residence

---

Classes are held in Trinity Hall

---

On-campus restaurant

---

24-hour supervision by our residential managers and supervisors

---

Access to Trinity College sports centre with swimming pool, climbing wall, squash courts, dance studios, indoor sports hall

---

Student common rooms and games rooms

---

Laundry facilities

---

WiFi access

---





## Alexandra College

Dublin, Ireland

---

Homestay accommodation

---

Secure 12 acre campus

---

10 minutes from Dublin city centre by tram

---

Outdoor sports facilities including hockey, soccer, rugby, athletics pitches, basketball & tennis courts

---

Multi-purpose sports hall for indoor sports and music & drama events

---

Modern spacious classrooms

---

Restaurant on campus

---

Student common rooms, arts & crafts, shop

---

WiFi access

---



## Griffith College

Dublin, Ireland

---

Modern apartment style residential accommodation with twin rooms

---

City centre campus

---

Full-board accommodation in fully serviced canteen

---

24-hour supervision by our residential managers and supervisors

---

WiFi access available

---

25 fully-equipped Classrooms, college standard lecture facilities

---

Laundry facilities

---

Each apartment includes a well-fitted kitchen and living area

---



## St. Raphaela's

Dublin, Ireland

### Homestay Accommodation

Quiet and mature residential neighbourhood on the south side of Dublin city

15 minutes from Dublin city centre by tram

Sports hall and all-weather outdoor sports facilities

26 fully-equipped classrooms

Emerald's longest running International Summer Centre

Tennis Courts

Hot lunch option

5 minute walk from Stillorgan Shopping Centre



## St. George's School

Ascot, Berkshire, UK

### Residential Accommodation in shared rooms

30 acres of stunning grounds and amazing facilities

Facilities include a swimming pool, 8 tennis courts, football and Lacrosse pitches, a dance studio, a drama studio, cookery and art rooms, and a theatre.

15 minute walk from Ascot train station

6 miles from Windsor and just, 30 minutes from central London

24-hour supervision by our residential managers and supervisors

Full-board accommodation with on-campus restaurant



**Cobham  
Hall**  
Kent, UK

---

Residential Accommodation

---

150 acres of beautiful parkland

---

Excellent sports facilities including indoor heated swimming pool

---

20 minutes by train from central London

---

Dance studio, drama studio and art rooms

---

24-hour supervision by our Residential Managers and Supervisors

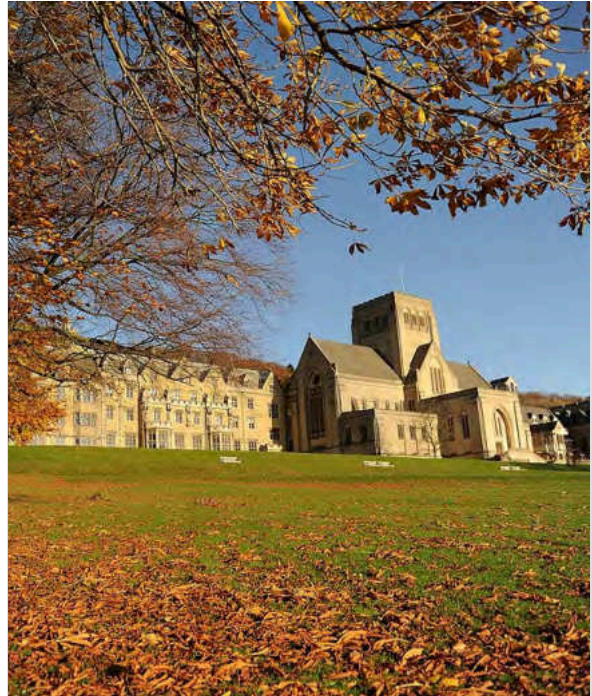
---

Full-board accommodation with on-campus restaurant

---

Comfortable common room areas

---



**Ampleforth  
College**  
Yorkshire, UK

---

Residential accommodation, single and twin ensuite available

---

2000 acres of beautiful Yorkshire parklands

---

Excellent facilities including tennis courts, football, rugby and cricket pitches, swimming pool, dance studio, arts studio, cookery room and a lake offering an array of watersports.

---

Special courses including Environmental, Conservation and bushcraft skills

---

1 hour from Leeds, 2 hours from Manchester

---

24-hour supervision by our residential managers and supervisors

---

Full-board accommodation with on-campus restaurant

---





emerald®  
cultural institute

Experience Tradition, Embrace Innovation

Emerald Cultural Institute  
10 Palmerston Park,  
Rathgar, Dublin  
D06 H9X8  
Ireland  
t +353 1 4973361  
f +353 1 4975008  
e [emerald@eci.ie](mailto:emerald@eci.ie)  
[www.eci.ie](http://www.eci.ie)